

150
1875 2025

UNIQUELY BRITISH DESIGNED HARDWARE...



SPECIAL WORKS

CROFTS & ASSINDER

EST. 1875

CELEBRATING **150** YEARS
1875 2025

of producing

“What the best dressed furniture is wearing.”

George Crofts (1840 - 1926)

You could spend a lifetime discovering unique British buildings,
furniture and landmarks; we have.

From the very beginning, Crofts and Assinder has specialised in the design and manufacture of extraordinary cabinet handles and luxury fittings.

Established in 1875 George Crofts and Fredrick Assinder commenced trading as brass founders at the heart of British industry in Birmingham, England. To this day, Crofts & Assinder has stood the test of time and still remains in the same hands of the families that created the company at the outset.

In our 150-year history we have had the privilege of dressing furniture at London's Ritz and Waldorf hotels, Parliament House in Buenos Aires and ships of the Cunard and White Star Line.

We endeavour to make the ordinary extraordinary, combining a unique blend of our British heritage with timeless design and quality.

CONTENTS

Skomer	4	Broadway	40
St. Helier	8	Stirling	44
Orkney	12	Knightsbridge	48
Cambridge	16	Henley	50
Braemar	20	Buckingham	54
Oxford	24	Douglas	56
Stormont	28	Backplates	58
Bamburgh	32	Finishes	62
Bowland	36		

KEY

FC	Fixing Centres
L	Length
W/D	Width/Diameter
H/P	Height/Projection

All dimensions are approximate and given in millimetres (mm).

Almost all of our Special Works products can be finished to order in Birmingham, in any of the bespoke finishes found in the back of this catalogue. Our in-house plating and polishing departments can reproduce the majority of finishes if provided with a swatch. Please give us a call if you have any bespoke requirements.



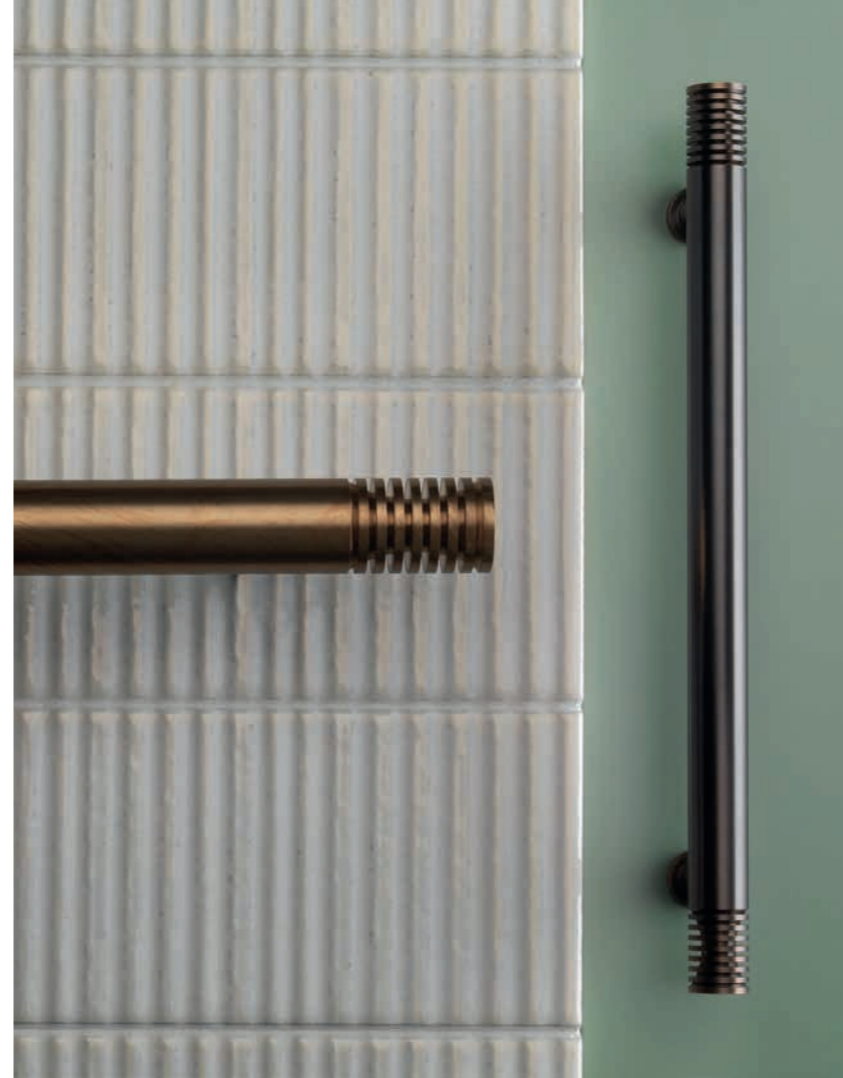
Architecturally inspired, depth perception and a little flair create an optical wonder.





Contiguous flat discs, intercepted by a central hourglass silhouette hide an exceptionally pleasing surprise layer. The devil is in the detail.

Standard Finishes: Brushed Satin Brass, Matt Black & Polished Nickel.





Honouring the incredible castles and fortresses peppered across the British Islands, this statuesque handle family is straight to the point.



Beautifully commanding. A new take on the square handle, St. Helier was borne out of the desire to create something both beautiful and tactile while maintaining a brutalist aesthetic. Square angles are softened by a subtle curve on the underside of the bar, to create a flawlessly comfortable experience when gripping.

Standard Finish: Brushed Satin Brass.





Based on the old oil drum barrels littering our industrial landscapes, the design for the Orkney came from finding beauty in the most unlikely of locations.





This unique design creates a knob and handle, which are both immediately recognisable and yet infinitely spellbinding. With a simple cylinder bound by strategically placed rings, this handle exudes strength and brutal industrialism with a splash of beauty.

Standard finishes: Matt Black, Brushed Satin Brass, Chrome.

The Orkney knob comes with a removable round backplate as standard. Diameter dimension (W/D) given, includes the backplate.





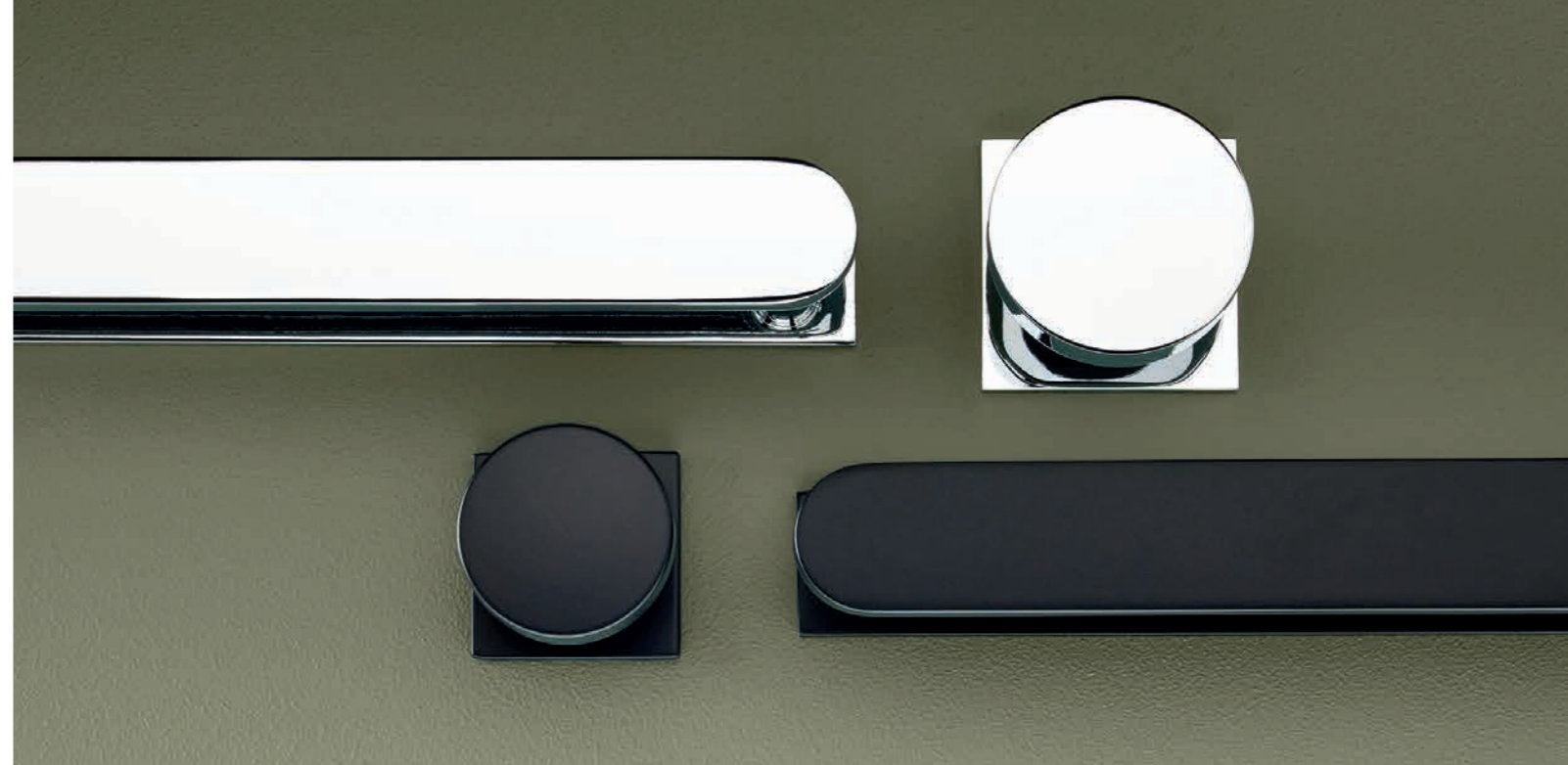
Inspired by the beauty and style of the Bauhaus movement, the expansive face of the Cambridge is extravagant yet simplistic, adding a touch of luxury to any home.





A flawless circle accentuated by brutal linear form, this product celebrates Bauhaus at its finest, over 100 years since its inception.

Standard Finishes: Matt Black, Brushed Satin Brass & Chrome.





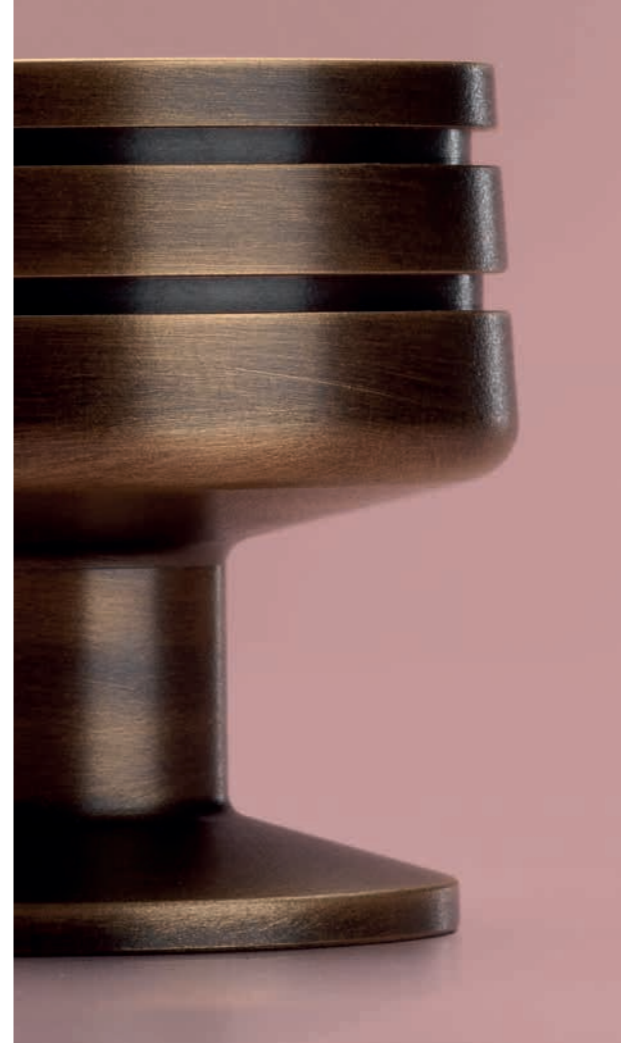
Subtle elegance, inspired by the delightful intricacies in the flow of woodgrain.





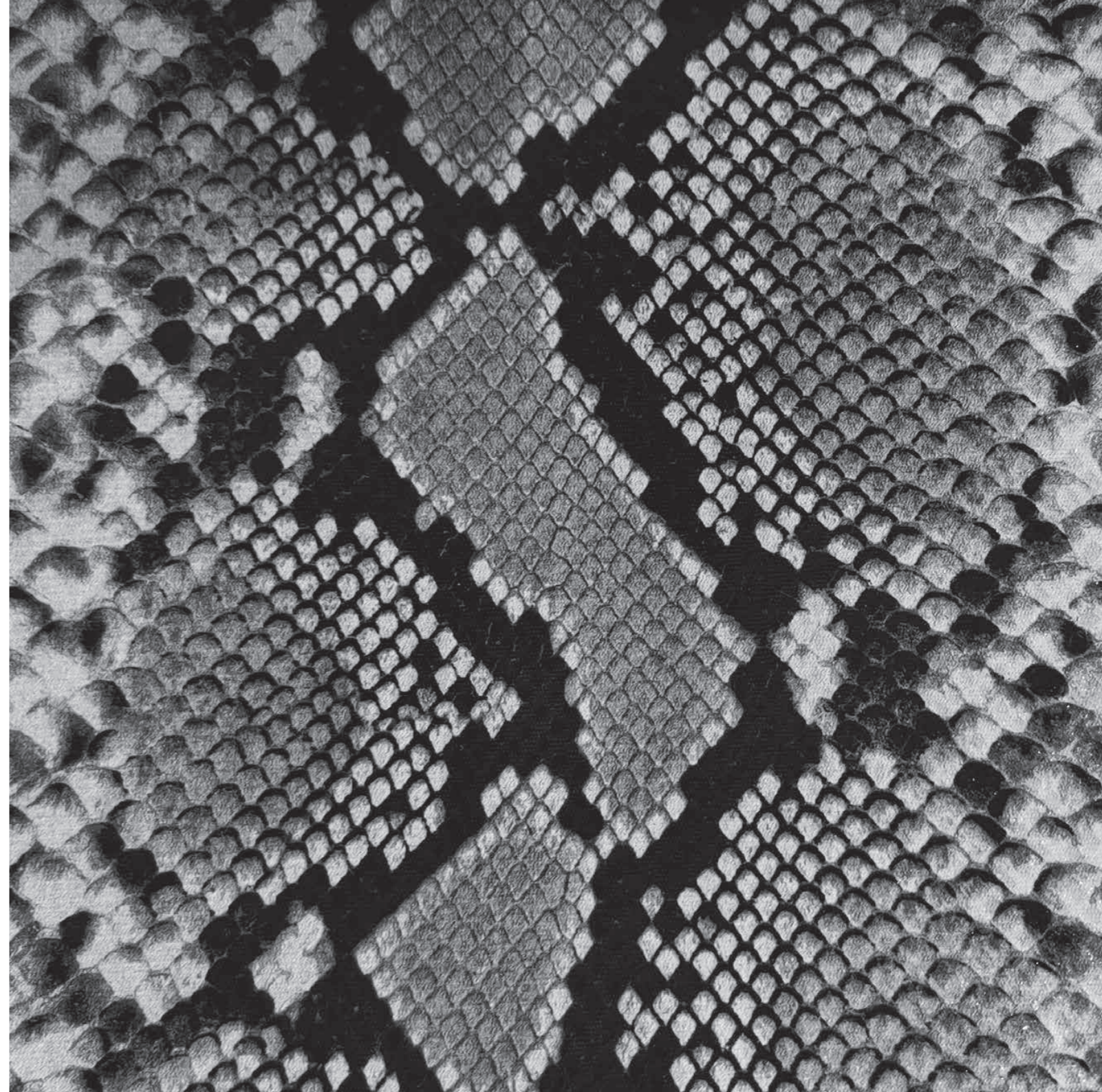
For an extra touch of sparkling sophistication, the gentle drift of the sloping contours on the Braemar handle are tactile yet tasteful.

Standard Finishes: Brushed Satin Brass & Brushed Satin Nickel.





Inspired by natural textures, this range presents a more feminine alternative to industrial knurling.





The Oxford handle family adds a little more character to the ever-popular knurling trend. With larger diamond forms, luxury oozes from this range and ensures it fits any space.

Standard Finish: Brushed Satin Brass.





Inspired by the beauty and serenity of the Brugmansia flower, the Stormont is designed to elevate any contemporary living space.





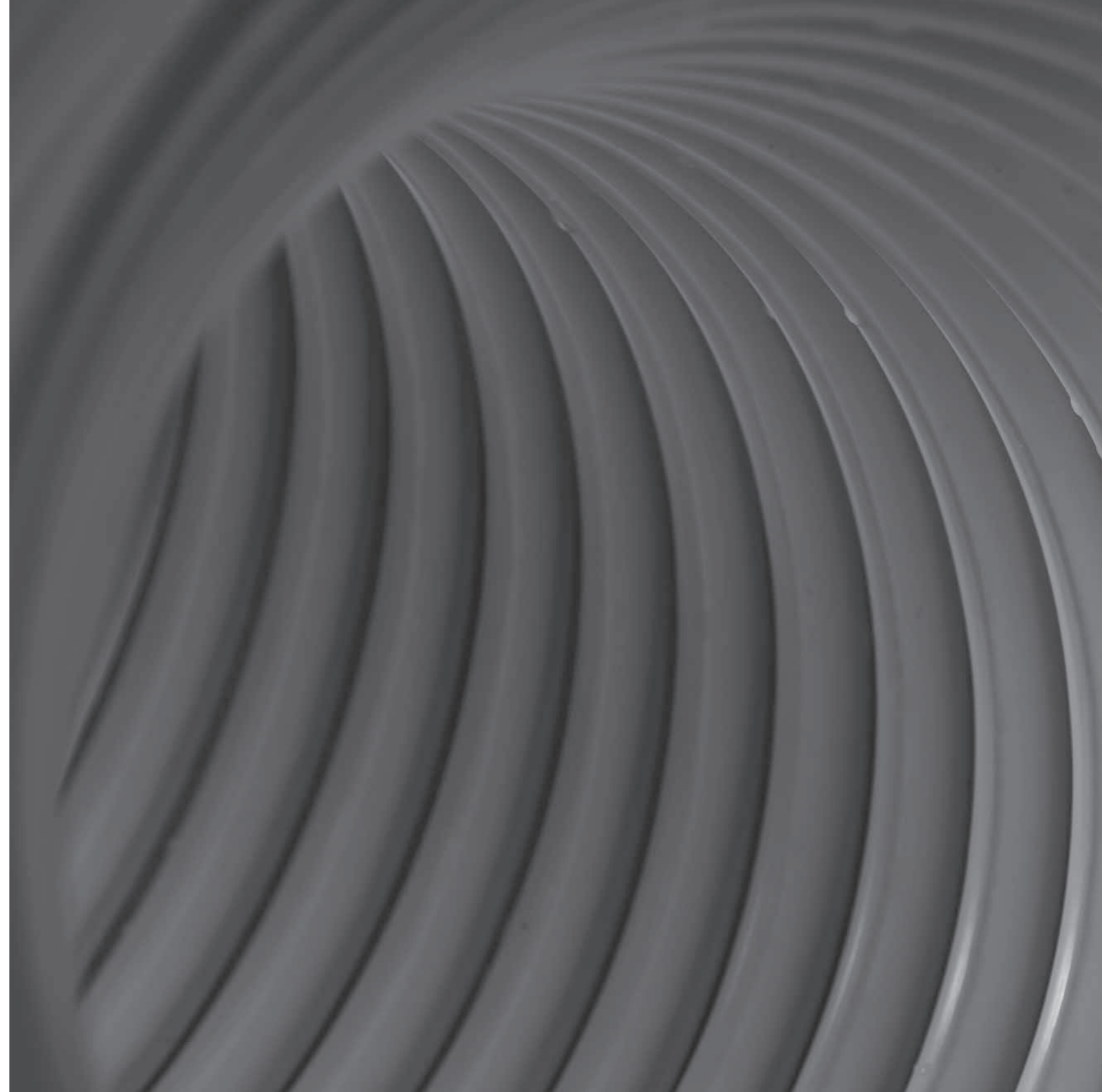
Graceful curves meet modish styling in this sophisticated designer handle.

Standard Finishes: Polished Brass, Antique, Brushed Satin Brass.





Precision-led design, beautifying the visual spectacle of the interior of an industrial coil.





The adjacent rings in this beautiful range put a new perspective on contemporary, industrial hardware befitting interiors both traditional and modern.

Standard Finishes: Brushed Satin Brass, Matt Black & Brushed Satin Nickel.





Humble undulations in this range represent strength and humility as well as pure craftsmanship.





The beautiful Bowland is refined simplicity at its best. Centring on innovation and design with a modesty only a true artist could capture, the pared back minimalism of this range is inspiring yet unassuming.

Standard Finishes: Brushed Satin Brass, Brushed Satin Nickel, Chrome, Matt Black.





Inspired by light refraction on multi-faceted gemstones, this bewitching handle blends art-deco allure with avant-garde styling to create a jewel of a range.



Oozing glitz and glamour, the Broadway family truly is a range for putting on a show.

The marvellously defined facets of the Broadway add a subtle yet dynamic touch to the handles to create the showmanship and grandeur for which this range was named.

Standard Finishes: Brushed Satin Brass & Brushed Satin Nickel.





Influenced by the patterning of stalactite formations,
the Stirling emanates regality with a hint of sumptuous luxury.



The Stirling is subtle yet undeniably ostentatious, adding a touch of class to any interior.

Standard Finishes: Brushed Satin Brass, Matt Black.





Classic, clean, and promising timeless elegance, the Knightsbridge family is the ultimate in enduring interior style.

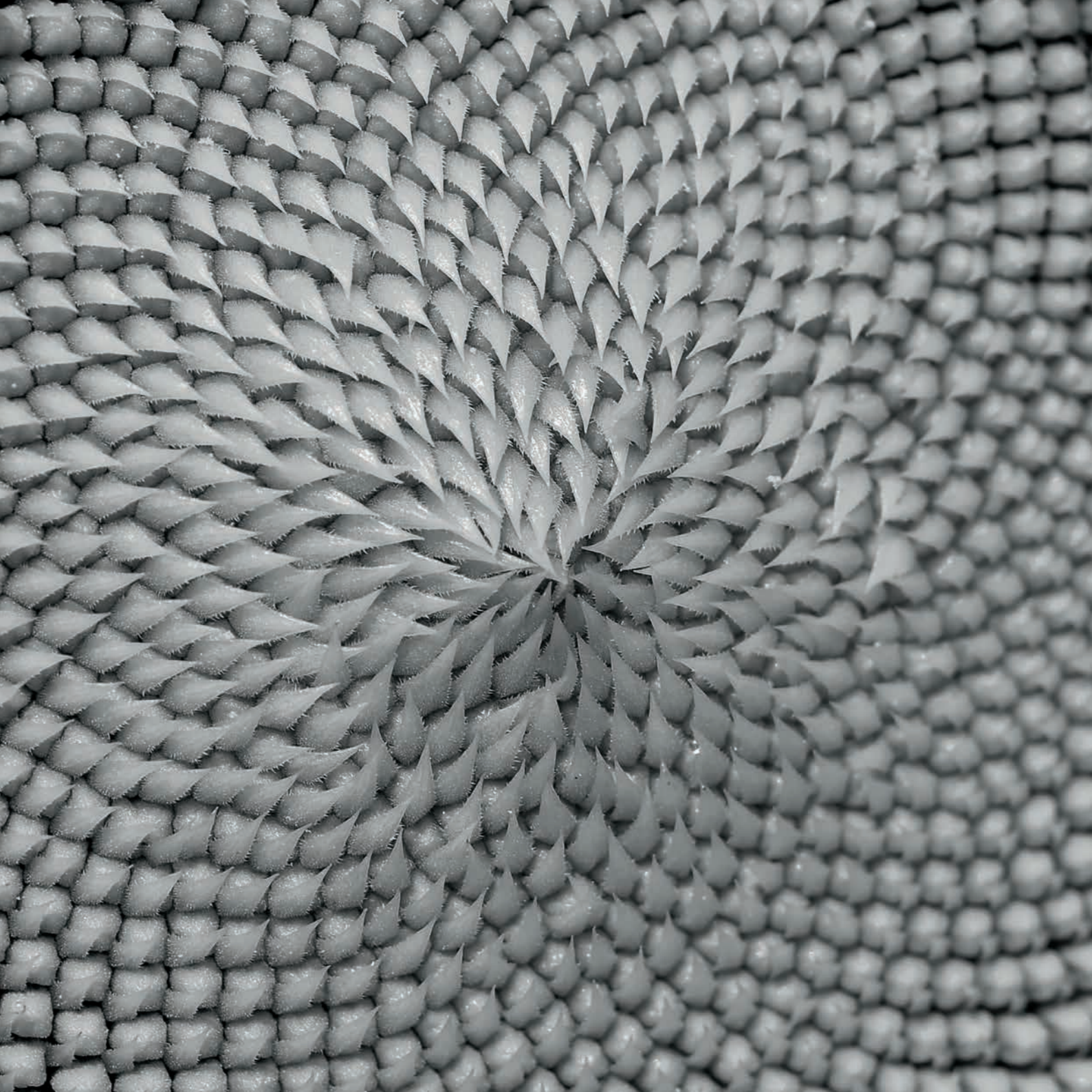
Standard finishes: Brushed Satin Nickel, Chrome, Polished Nickel.





Drawing its inspiration from the gently knurled seeds of the centre of a sunflower on a summer's day.

Sensual, sleek yet strong.





The sleek façade of the Henley, combined with a chic industrial effect, gives this beautiful range a subtle balance of pared down perfection and delicate detailing to create an enduring statement piece.

Standard finishes: Chrome, Brushed Satin Brass, Black Nickel, Matt Black.



Black Nickel finish currently only available in Henley range.





Art Deco and Bauhaus come into play with the Buckingham range. Modesty meets exclusivity as classic lines are given a modern twist.

Standard finishes: Brushed Satin Nickel, Chrome, Polished Nickel.



The Douglas is graceful and orbicular. Reflecting the beauty and lightness of bubbles floating in the air, this knob is elemental yet stunning. The second knob in the collection adds a detailed reeded effect for a more captivating finish.

Standard Finishes: Chrome, Brushed Satin Nickel, Polished Nickel.





Designed to fit our most popular ranges, our backplates add a hint of modern elegance; the perfect finishing touch to elevate your handles to another level.



Standard Finishes: Matt Black, Brushed Satin Brass, Brushed Satin Nickel, Chrome, Polished Nickel.



All finishes are standard as indicated within the catalogue. Where not listed as standard, other finishes are available as bespoke from the twelve Special Works finishes as pictured below. PLEASE NOTE due to photographic, digital and printing processes, some imagery may not truly represent the actual finish of the product. Please see real sample for colour.



Due to the hand finished nature of all of our bespoke products, there may be slight variations in colour and texture, which are individual to each product. This is particularly applicable to the Patinated Brass and Living Finishes, where each individual piece will contain a completely unique patina. The origination of the brass and manufacturing processes of all products may also affect any bespoke finish, from product to product and batch to batch. Therefore Crofts & Assinder cannot guarantee that the finish on products will match exactly the finish of any previously issued samples / products and any subsequent orders, which you may place with Crofts & Assinder. However, we will make every effort to match finishes as closely as possible.

Notes on the Living Finish: This is a bespoke, in-house produced finish which is made to look tarnished and is left unlacquered to age naturally. For this reason, any item in the Living Finish will continue to tarnish through touch and everyday use. Items will tarnish differently from product to product and batch to batch and there is absolutely no guarantee that the same two items from the same batch will match. This is part of the unique, bespoke appeal of the finish and should be borne in mind when selecting this finish. No refunds can be given on products made to order from our bespoke finishes including, in this case, due to inconsistencies in finish which there invariably will be. As per all of our products; cleaners and abrasives should never be used on this finish.

All bespoke finishes are made in Britain.

PLEASE NOTE that due to the inherent nature of the in-house hand finishing provided, products with a bespoke finish unfortunately cannot be returned or refunded.

Product Care Instructions

To prolong the life of Crofts & Assinder products we recommend cleaning when required using lukewarm water on a damp, well wrung-out lint free cloth. Also, a soft-bristled toothbrush can be used for the removal of dirt trapped in the knurling or grooves. Once clean, ensure to thoroughly dry with a soft cloth, paying particular attention to the base of the stem of the product. A light coating of natural wax will help seal any chips or scratches.

We strongly advise never to use commercial chemical or abrasive cleaning products on any Crofts & Assinder products, including antibacterial cleaners. These will remove the protective coating and the product may become damaged, possibly changing the appearance as a result. Also, little chips or scratches in the lacquer will allow the air to tarnish the metal underneath over time. So particular care is required by following these instructions, otherwise the 12-month warranty may become invalid.

All designs remain the property of Crofts & Assinder. We protect and defend our intellectual property rights globally.

150
1875 2025

CROFTS & ASSINDER

EST. 1875

T : +44 (0) 121 622 1074

E : general@crofts.co.uk

W : www.crofts.co.uk