

STYLE GUIDE  
CROFTS & ASSINDER

EST. 1875

# INIMITABLE QUALITY & DESIGN FOR 150 YEARS

You could spend a lifetime discovering unique British buildings, furniture and landmarks; we have. From the very beginning Crofts & Assinder has specialised in the design and manufacture of extraordinary cabinet handles and luxury fittings.

Established in 1875, George Crofts and Frederick Assinder commenced trading as brass founders at the heart of British industry in Birmingham, England. To this day, Crofts & Assinder has stood the test of time and remains in the same hands of the families that created the company at the outset. We endeavour to make the ordinary extraordinary, combining a unique blend of our British heritage with timeless design and quality.

Today we're proud to introduce our all new Style Guide. Featuring a collection of our finest and most popular designs, thoughtfully chosen for the refined customer. In this edition, we offer style advice, including which of our hardware ranges we would recommend to match together, helping you select the best handles for your clients, for every project.

We hope you enjoy the 2026 Style Guide and we look forward to continuing to bring exceptional British design to market with every collection we launch.



## KEY

|     |                   |
|-----|-------------------|
| FC  | Fixing Centres    |
| L   | Length            |
| W/D | Width/Diameter    |
| H/P | Height/Projection |

*All dimensions are approximate and given in millimetres (mm).*

# CONTENTS

01

## DESIGNER

Fenchurch      Kingston  
Stockholm      Corbusier  
Retro      Torbay  
Avon      Dorchester



05

## TRANSITIONAL

Windsor      Stratford      Arundel  
Calgary      Georgia      Chichester  
Chambery      Marlborough      Malvern



02

## HERITAGE

Keswick      Wexford      Winchester  
Hamilton      Montreal      Warwick  
Leamington      Bordeaux      Amersham

06

## FINISHES & FAQs

Finishes Table  
Frequently Asked Questions

03

## CONTEMPORARY

Chester      Alnwick  
Banbury      Midhurst  
Kew

07

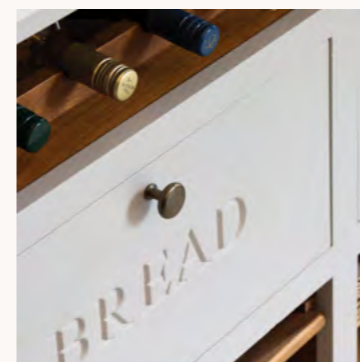
## ADDITIONAL NOTES

Sustainability  
Colour Reproduction  
Changes & Modifications  
Intellectual Property

04

## SHAKER

Salcombe      Buxton  
Ludlow      Monmouth  
Annecy      Brecon  
George



08

## COMPLIANCE

Accreditations  
Acknowledgements



01

# DESIGNER

Fenchurch | Stockholm | Retro | Avon | Kingston | Corbusier  
Torbay | Dorchester

# FENCHURCH PULL HANDLE & KNOB

Chic, contemporary design at its finest. Provoking an air of luxury which Crofts & Assinder is renowned for, the Fenchurch exudes a character of its own. Utilising alternating facets to form a visual spectacle, when viewed from different angles, the surface patterning plays with the light creating a mesmerising effect, dependent upon how you view the product.



Base Material - Mazak

|                    | EC  | L   | W/D | H/P |
|--------------------|-----|-----|-----|-----|
| HN-M-4298-160 Pull | 160 | 273 | 14  | 43  |
| HN-M-4298-256 Pull | 256 | 369 | 14  | 43  |
| KB-M-4297-35 Knob  | -   | -   | 35  | 32  |

Shown left in Brushed Satin Brass and above in Chrome



Brushed Satin Brass



American Bronze



Brushed Satin Nickel



Chrome



SIMPLE. ELEGANT. LUXURY.

Crofts & Assinder's take on the wonderful world of Scandinavian design. The tapered legs on this bewitching handle look effortlessly chic and ensure that the range stands out due to the inherent beauty found in the finer details.

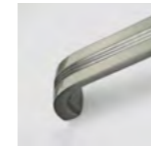
RETRO

Shown in Chrome

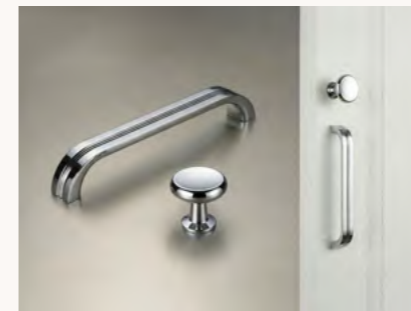
| Base Material - Mazak |      | FC  | L   | W/D | H/P |
|-----------------------|------|-----|-----|-----|-----|
| HN-M-3923-160         | Pull | 160 | 171 | 20  | 26  |



Chrome



Brushed Satin Nickel



MIX & MATCH

Pair the Retro handle with the Salcombe knob, both in Chrome (p36), for a sleek, modern finish with subtle vintage charm.



STOCKHOLM

Shown in All Finishes

| Base Material - Mazak |      | FC  | L   | W/D | H/P |
|-----------------------|------|-----|-----|-----|-----|
| KB-M-4251-56          | Knob | -   | 56  | 24  | 24  |
| HN-M-4245-128         | Pull | 128 | 160 | 24  | 32  |



Brushed Satin Brass



Matt Black



Chrome



## COMFORT SHAPED BY DESIGN

Featuring the current trend for soft geometry, with hexagonal facets creating the leg structure, and a rounded body for tactile handling, the Avon evidences that comfort and exceptional design can go hand-in-hand.



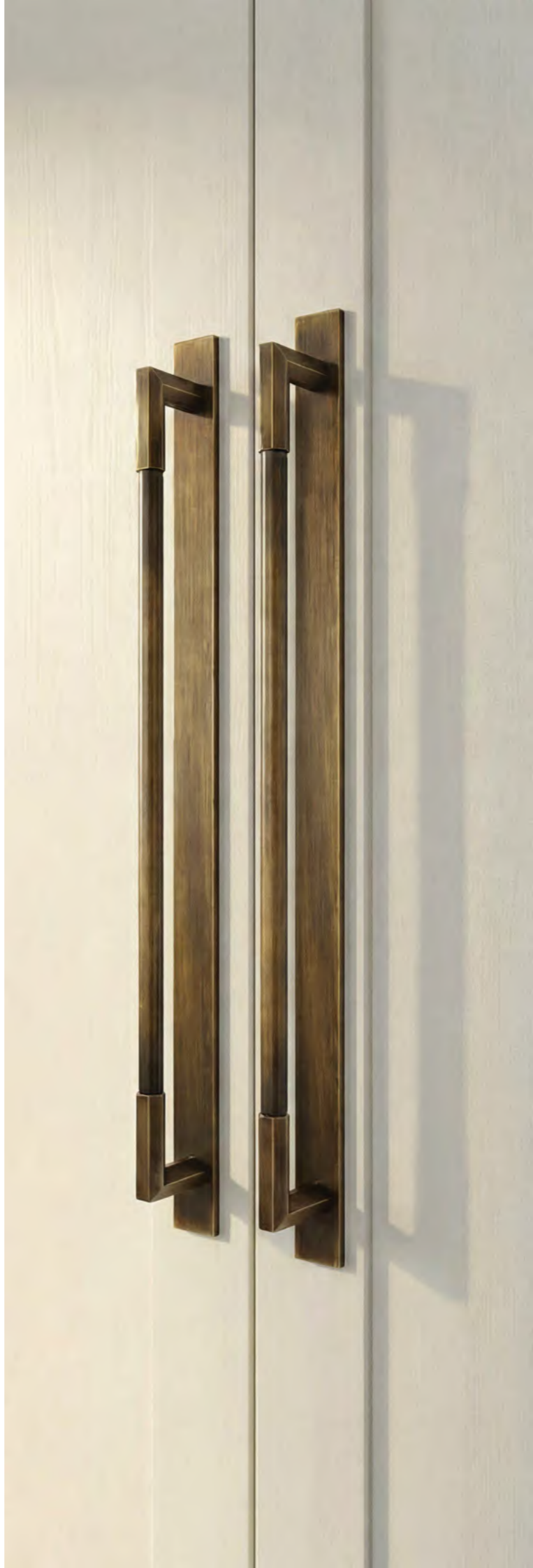
## AVON

Shown in Brushed Satin Nickel

| Base Material - Mazak |      | FC  | L   | W/D | H/P |
|-----------------------|------|-----|-----|-----|-----|
| KB-M-4299-34          | Knob | -   | 74  | 34  | 31  |
| KB-M-4299-38          | Knob | -   | 74  | 38  | 33  |
| HN-M-4300-160         | Pull | 160 | 203 | 23  | 38  |
| HN-M-4300-256         | Pull | 256 | 299 | 23  | 38  |



Chrome    Brushed Satin Nickel    Brushed Satin Brass    American Bronze



## KINGSTON

Shown in Iron



| Base Material - Iron |      | FC  | L   | W/D | H/P |
|----------------------|------|-----|-----|-----|-----|
| HN-I-4187-128        | Pull | 128 | 160 | 16  | 46  |
| HN-I-4187-160        | Pull | 160 | 193 | 16  | 46  |



Iron    Matt Black

The Kingston range looks incredible in industrial style interiors. Dark, moody colours complement the masculine feel and exude luxe lifestyle.

## CORBUSIER

Shown in Brushed Satin Nickel

| Base Material - Mazak |      | FC  | L   | W/D | H/P |
|-----------------------|------|-----|-----|-----|-----|
| KB-M-3920-34          | Knob | -   | 34  | 34  | 23  |
| HN-M-3921-128         | Pull | 128 | 142 | 14  | 34  |
| HN-M-3921-160         | Pull | 160 | 174 | 14  | 34  |



Chrome    Brushed Satin Nickel



## MIX & MATCH

Pair the Corbusier handle with the Georgia knob, both in Brushed Satin Nickel (p47), to create a clean, cohesive look with a refined finish.





## TORBAY

Shown in American Bronze

| Base Material - Mazak |      | FC  | L   | W/D | H/P |
|-----------------------|------|-----|-----|-----|-----|
| KB-M-4301-34          | Knob | -   | -   | 34  | 29  |
| HN-M-4302-160         | Pull | 160 | 244 | 12  | 37  |
| HN-M-4302-256         | Pull | 256 | 346 | 12  | 37  |



Brushed Satin Brass



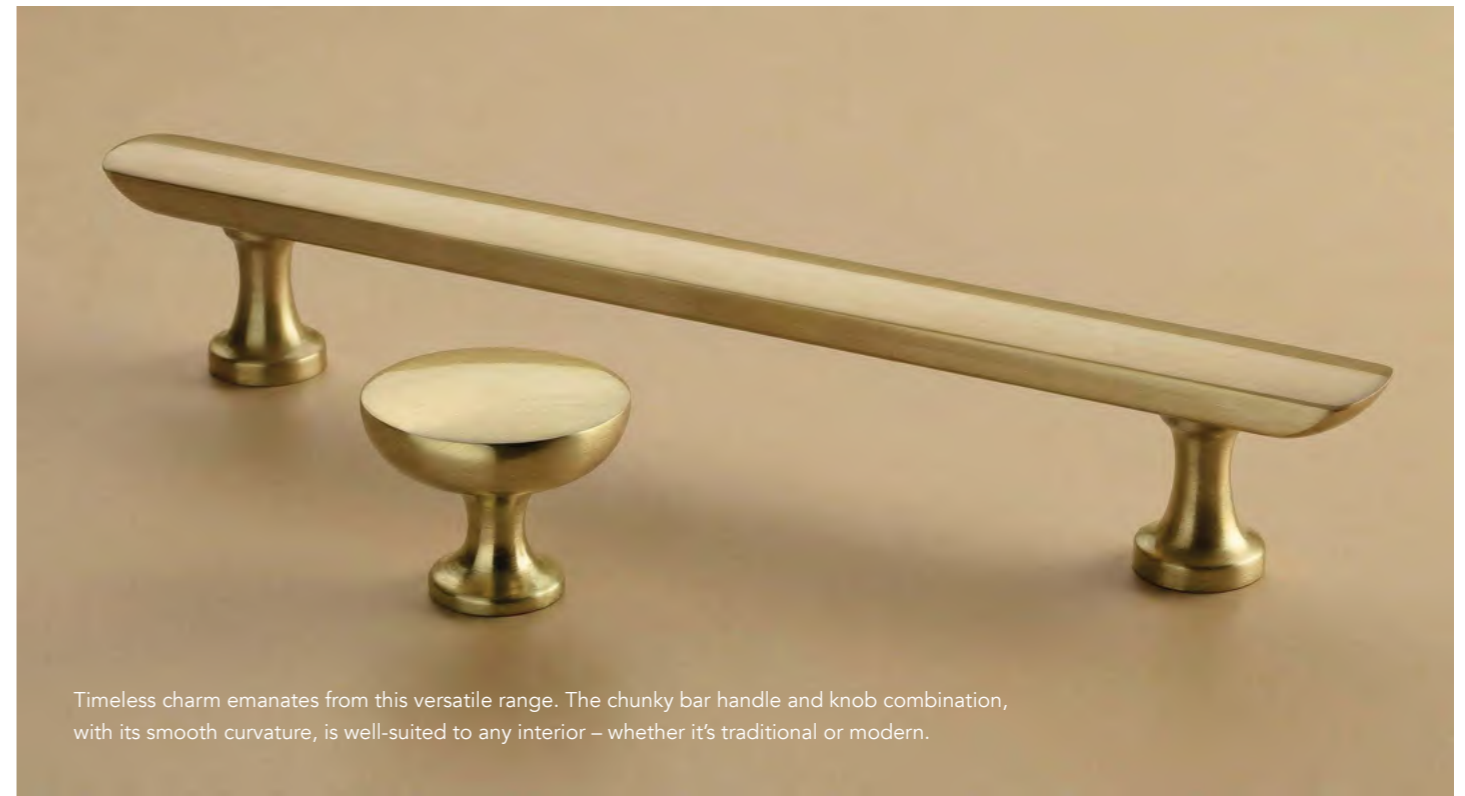
Brushed Satin Nickel



Chrome



American Bronze



Timeless charm emanates from this versatile range. The chunky bar handle and knob combination, with its smooth curvature, is well-suited to any interior – whether it's traditional or modern.



## DORCHESTER

Shown above in Brushed Satin Brass and to the right in All Finishes

| Base Material - Mazak |      | FC  | L   | W/D | H/P |
|-----------------------|------|-----|-----|-----|-----|
| KB-M-4247-38          | Knob | -   | -   | 38  | 31  |
| HN-M-4246-160         | Pull | 160 | 214 | 21  | 34  |



Chrome



American Bronze



Brushed Satin Brass



American Copper



### MIX & MATCH

Pair the Dorchester knob with the Marlborough handle, (p49) to create a timeless, coordinated look with a warm, classic finish.



02

# HERITAGE

Keswick | Hamilton | Leamington | Wexford | Montreal  
| Bordeaux | Winchester | Warwick | Amersham

# KESWICK

The Keswick is beautiful yet brutal, suiting both traditional country cottage interiors as well as elegant spaces where refinement is key.



## TRADITIONAL WITH A CONTEMPORARY TWIST

The Hamilton range looks at home in any setting. The linear detailing and stepped edge come together to create a true modern classic.

| Base Material - Mazak |      | FC  | L   | W/D | H/P |
|-----------------------|------|-----|-----|-----|-----|
| KB-M-4257-34          | Knob | -   | -   | 34  | 25  |
| KB-M-4257-38          | Knob | -   | -   | 38  | 28  |
| HN-M-4258-128         | Pull | 128 | 147 | 25  | 28  |
| HN-M-4258-160         | Pull | 160 | 179 | 25  | 28  |
| HN-M-4259-96          | Cup  | 96  | 128 | 36  | 27  |

Shown in American Bronze



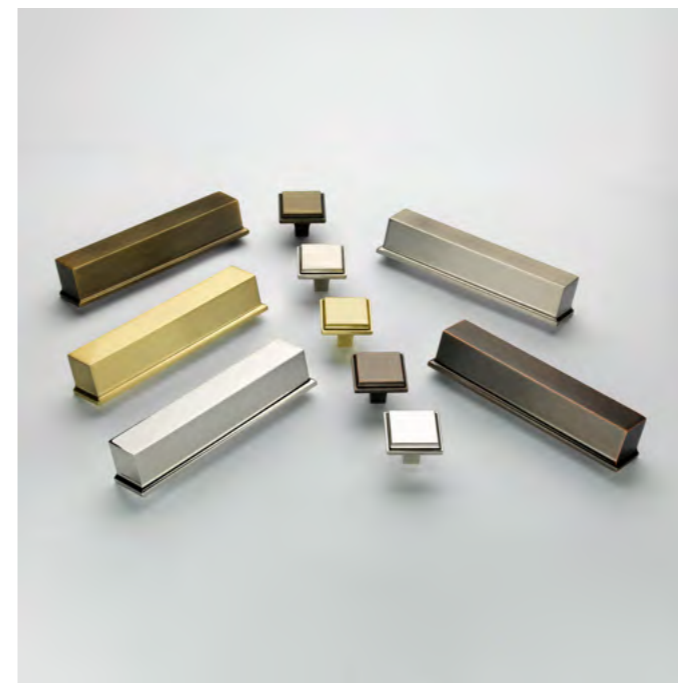
American Bronze

American Copper

Brushed Satin Nickel

Chrome

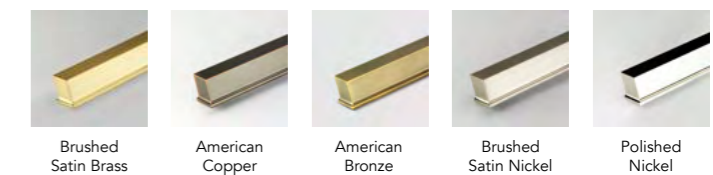
Brushed Satin Brass



# HAMILTON

Shown in All Finishes

| Base Material - Mazak |      | FC  | L   | W/D | H/P |
|-----------------------|------|-----|-----|-----|-----|
| KB-M-4248-34          | Knob | -   | -   | 34  | 28  |
| HN-M-4159-128         | Cup  | 128 | 143 | 28  | 28  |



Brushed Satin Brass

American Copper

American Bronze

Brushed Satin Nickel

Polished Nickel



### A DECAGONAL OBJET D'ART

The Leamington presents a fresh look at the art-deco genre. With the classy and stylistic flair that this period was known for, the broad face and faceted edges combine to create an exquisite and enduring range.



## LEAMINGTON

Shown in Brushed Satin Brass

| Base Material - Mazak |      | FC  | L   | W/D | H/P |
|-----------------------|------|-----|-----|-----|-----|
| KB-M-4243-35          | Knob | -   | -   | 35  | 28  |
| KB-M-4243-40          | Knob | -   | -   | 40  | 32  |
| HN-M-4256-160         | Pull | 160 | 202 | 23  | 31  |



Brushed Satin Nickel



Brushed Satin Brass

The art-deco inspired Leamington feels at home in luxury interiors with a classical vibe.



## WEXFORD

Shown in Nickel Pewter

| Base Material - Brass |      | FC | L  | W/D | H/P |
|-----------------------|------|----|----|-----|-----|
| HN-B-4463             | Cup  | 64 | 96 | 29  | 32  |
| KB-B-4384-30          | Knob | -  | -  | 30  | 27  |
| KB-B-4384-35          | Knob | -  | -  | 35  | 34  |



Nickel Pewter

## MONTREAL

Shown in Iron

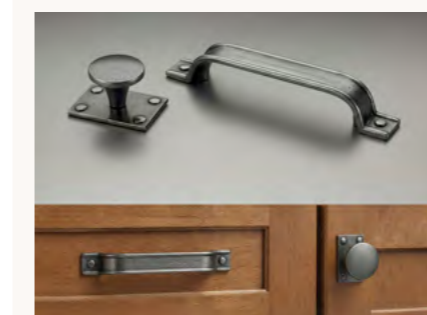
| Base Material - Iron |      | FC | L   | W/D | H/P |
|----------------------|------|----|-----|-----|-----|
| KB-I-4165-38         | Knob | -  | 58  | 38  | 33  |
| HN-I-4164-96         | Cup  | 96 | 138 | 54  | 29  |



Iron



Matt Black



### MIX & MATCH

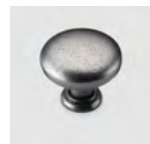
Match the Montreal knob with the Ancey handle (p38) to create a cohesive, seamless, rustic look throughout the space.



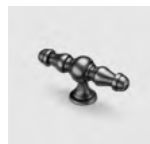
## BORDEAUX

Shown in Iron

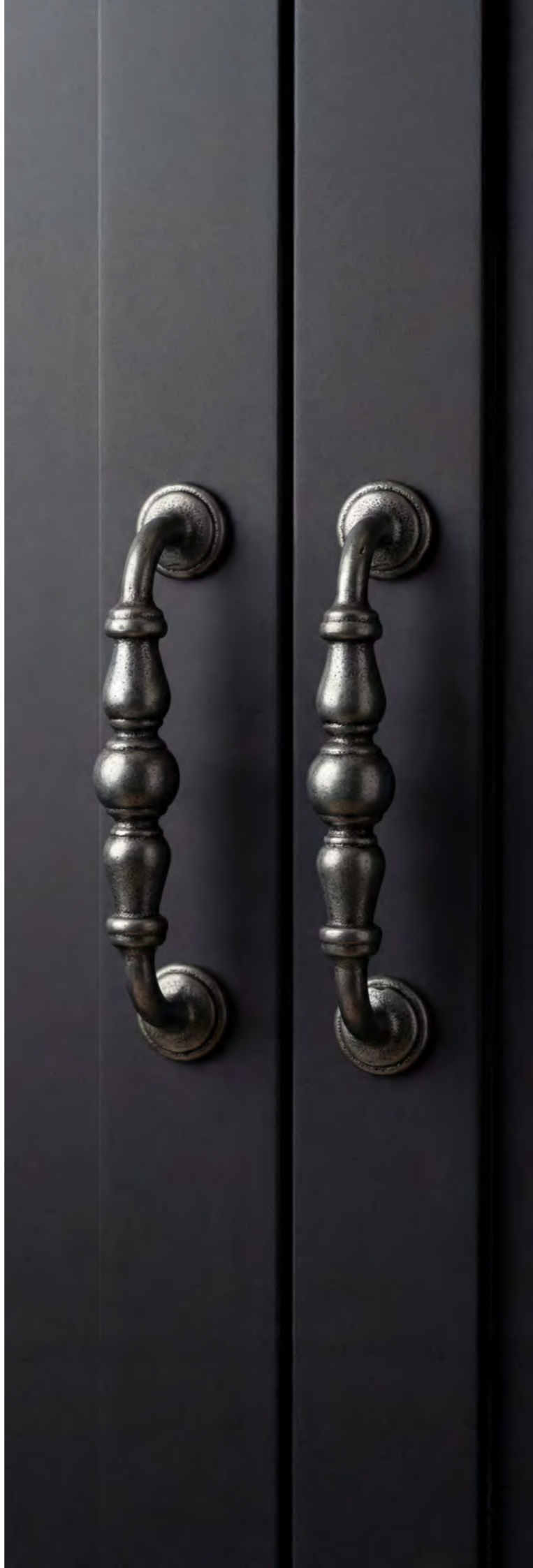
| Base Material - Iron |        | FC  | L   | W/D | H/P |
|----------------------|--------|-----|-----|-----|-----|
| KB-I-3624-35         | Knob   | -   | -   | 35  | 37  |
| KB-I-3624-48         | Knob   | -   | -   | 48  | 39  |
| HN-I-3626-128        | Pull   | 128 | 153 | 25  | 40  |
| KB-I-3625-90         | T- Bar | -   | 90  | 25  | 42  |



Iron Knob



Iron T-Bar



## WINCHESTER

Shown in Iron

| Base Material - Iron |      | FC  | L   | W/D | H/P |
|----------------------|------|-----|-----|-----|-----|
| KB-I-3983-34         | Knob | -   | -   | 34  | 28  |
| KB-I-3983-38         | Knob | -   | -   | 38  | 30  |
| HN-I-3984-128        | Pull | 128 | 143 | 15  | 36  |
| HN-I-3984-160        | Pull | 160 | 175 | 15  | 36  |



Iron





## AMERSHAM

Shown in Polished Brass

| Base Material - Brass |     | FC | L  | W/D | H/P |
|-----------------------|-----|----|----|-----|-----|
| HN-B-3980-53          | Cup | 49 | 53 | 29  | 17  |
| HN-B-3980-98          | Cup | 94 | 98 | 36  | 23  |



Polished Brass

Chrome



## WARWICK

Shown in Iron

| Base Material - Iron |               |           | FC  | L   | W/D | H/P |
|----------------------|---------------|-----------|-----|-----|-----|-----|
| 55(a)                | HN-I-3175-128 | Pull      | 128 | 144 | 27  | 18  |
| 55(b)                | HN-I-3174-128 | Pull      | 128 | 146 | 15  | 28  |
| 55(c)                | HN-I-3078-96  | Pull      | 96  | 150 | 21  | 36  |
| 55(d)                | HN-I-3173-64  | Cup       | 64  | 102 | 44  | 23  |
| 55(d)                | HN-I-3172-64  | Cup       | 64  | 100 | 41  | 23  |
| 55(e)                | KB-I-3379-34  | Knob      | -   | -   | 34  | 29  |
| 55(e)                | KB-I-3379-38  | Knob      | -   | -   | 38  | 31  |
| 55(f)                | BP-I-3380-22  | Backplate | -   | -   | 22  | 4   |
| 55(f)                | BP-I-3380-25  | Backplate | -   | -   | 25  | 5   |
| 55(g)                | KB-I-3159     | Knob      | -   | -   | 28  | 40  |
| 55(h)                | KB-I-2866-34  | Knob      | -   | -   | 34  | 29  |
| 55(h)                | KB-I-2866-38  | Knob      | -   | -   | 38  | 29  |
| 55(i)                | KB-I-3257-35  | Knob      | -   | -   | 35  | 24  |
| 55(j)                | KB-I-3161     | Knob      | -   | 38  | 20  | 30  |
| 55(k)                | BP-I-3158     | Backplate | -   | -   | 32  | 4   |





03

# CONTEMPORARY

Chester | Banbury | Kew | Alnwick | Midhurst



# CHESTER

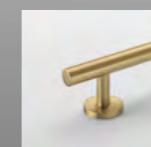
Exceptional yet simple design with a beautiful reeded element, ensures that the Chester remains refined and sophisticated while fitting with both modern and classical interiors.



Base Material - Mazak

|               |      | FC  | L   | W/D | H/P |
|---------------|------|-----|-----|-----|-----|
| KB-M-4294-32  | Knob | -   | -   | 32  | 47  |
| HN-M-4295-64  | Cup  | 64  | 85  | 24  | 24  |
| HN-M-4295-160 | Cup  | 160 | 181 | 24  | 24  |
| HN-M-4296-160 | Pull | 160 | 220 | 28  | 38  |
| HN-M-4296-256 | Pull | 256 | 316 | 28  | 38  |

Shown left in American Bronze and above in Brushed Satin Nickel



Brushed Satin Brass



American Bronze



Brushed Satin Nickel

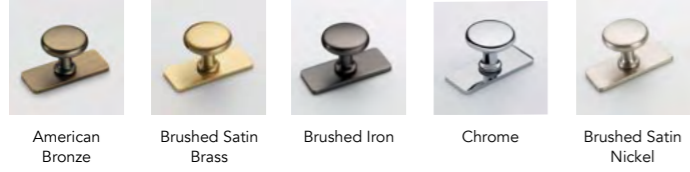


Chrome

# BANBURY

Shown in Chrome, American Bronze and Brushed Satin Brass

| Base Material - Mazak |      | FC  | L   | W/D | H/P |
|-----------------------|------|-----|-----|-----|-----|
| KB-M-4252-32          | Knob | -   | 58  | 32  | 32  |
| HN-M-4244-128         | Pull | 128 | 170 | 21  | 38  |



## INDUSTRIAL AND UTILITARIAN

A fusion of industrial and utilitarian principles, the Banbury is both bold and humble. Its softened edges and unostentatious lines, ensure that it is simply sensational.

# KEW

Shown in Brushed Gold

| Base Material - Mazak |      | FC  | L   | W/D  | H/P  |
|-----------------------|------|-----|-----|------|------|
| HN-M-4215-160         | Pull | 160 | 190 | 25.5 | 25.8 |



Brushed Satin Nickel



Brushed Gold



# ALNWICK

Shown in Black Nickel

| Base Material - Mazak |      | FC  | L   | W/D | H/P |
|-----------------------|------|-----|-----|-----|-----|
| HN-M-4199-160         | Pull | 160 | 170 | 12  | 34  |



Black Nickel



Chrome



# MIDHURST

Shown in American Copper

| Base Material - Mazak |      | FC  | L   | W/D | H/P |
|-----------------------|------|-----|-----|-----|-----|
| HN-M-4217-160         | Pull | 160 | 177 | 20  | 20  |



American Copper





04

# SHAKER

Salcombe | Ludlow | Anney | George | Buxton | Monmouth | Brecon



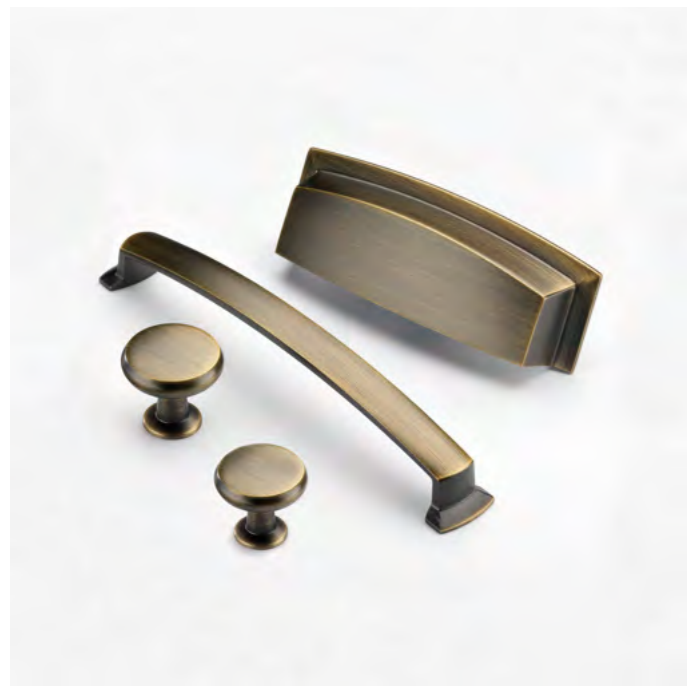
## LUDLOW

Shown in Iron

| Base Material - Iron |      | FC  | L   | W/D | H/P |
|----------------------|------|-----|-----|-----|-----|
| KB-I-3949            | Knob | -   | 58  | 20  | 38  |
| HN-I-3950-128        | Pull | 128 | 141 | 12  | 36  |
| HN-I-3950-160        | Pull | 160 | 176 | 16  | 40  |
| HN-I-3950-192        | Pull | 192 | 210 | 17  | 46  |



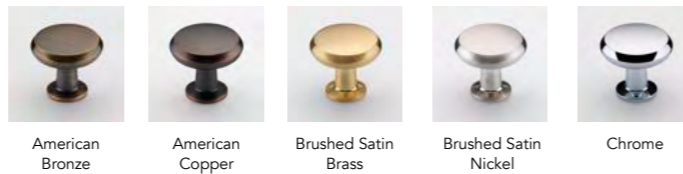
Iron



## SALCOMBE

Shown in American Bronze

| Base Material - Mazak |      | FC  | L   | W/D | H/P |
|-----------------------|------|-----|-----|-----|-----|
| HN-M-4260-96          | Cup  | 96  | 124 | 40  | 26  |
| KB-M-4261-34          | Knob | -   | -   | 34  | 30  |
| KB-M-4261-38          | Knob | -   | -   | 38  | 34  |
| HN-M-4269-160         | Pull | 160 | 178 | 16  | 27  |



American Bronze American Copper Brushed Satin Brass Brushed Satin Nickel Chrome



### MIX & MATCH

Pair the Salcombe knob with the Dorchester handle, both in Brushed Satin Brass (p15), for a warm, sophisticated look with timeless elegance.



## ANNECY

Shown in Iron

| Base Material - Iron |      | FC  | L   | W/D | H/P |
|----------------------|------|-----|-----|-----|-----|
| HN-I-4098-128        | Pull | 128 | 164 | 20  | 25  |
| HN-I-4098-160        | Pull | 160 | 196 | 20  | 25  |



Iron



## GEORGE

Shown in Iron

| Base Material - Iron |      | FC  | L   | W/D | H/P |
|----------------------|------|-----|-----|-----|-----|
| KB-I-3849-32         | Knob | -   | 32  | 32  | 28  |
| HN-I-3851-96         | Cup  | 96  | 145 | 27  | 41  |
| HN-I-3850-128        | Pull | 128 | 177 | 24  | 28  |
| HN-I-3850-224        | Pull | 224 | 268 | 24  | 28  |



Iron

The George range elevates interiors where perfect imperfection is valued - the Bauhaus square edges, softened by the sand-casting process ensure comforting character in every setting.

## BUXTON

Shown in Iron

| Base Material - Iron |      | FC | L | W/D | H/P |
|----------------------|------|----|---|-----|-----|
| KB-I-3910-34         | Knob | -  | - | 34  | 40  |



Iron

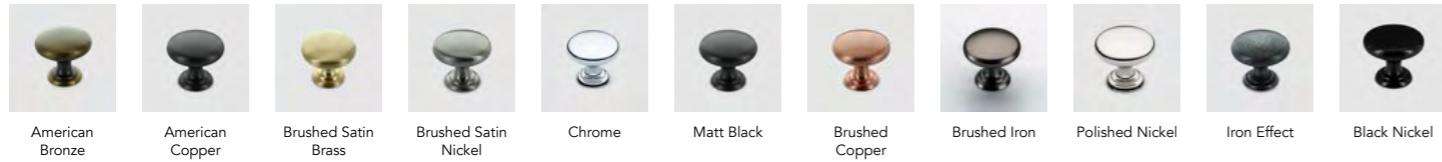




## MONMOUTH

Shown top left in American Bronze, bottom left in Brushed Satin Brass and bottom right in Chrome

| Base Material - Mazak |            | FC  | L   | W/D | H/P |
|-----------------------|------------|-----|-----|-----|-----|
| KB-M-3976-32          | Knob       | -   | -   | 32  | 27  |
| KB-M-3976-38          | Knob       | -   | -   | 38  | 32  |
| HN-M-3978-64          | Round Cup  | 64  | 104 | 48  | 30  |
| HN-M-3981-64          | Square Cup | 64  | 104 | 48  | 30  |
| HN-M-3977-128         | Pull       | 128 | 193 | 20  | 26  |
| HN-M-3977-160         | Pull       | 160 | 232 | 20  | 26  |



Timeless design with humble overtones - the sand-cast burred effect of the Brecon gives a more hand-crafted appeal than it's precision inspired sister handle, the Monmouth.



## BRECON

Shown above in Matt black and right in Iron

| Base Material - Iron |      | FC  | L   | W/D | H/P |
|----------------------|------|-----|-----|-----|-----|
| KB-I-3624-35-KO      | Knob | -   | -   | 35  | 33  |
| HN-I-3925-64         | Pull | 64  | 104 | 48  | 30  |
| HN-I-3924-128        | Cup  | 128 | 193 | 20  | 26  |

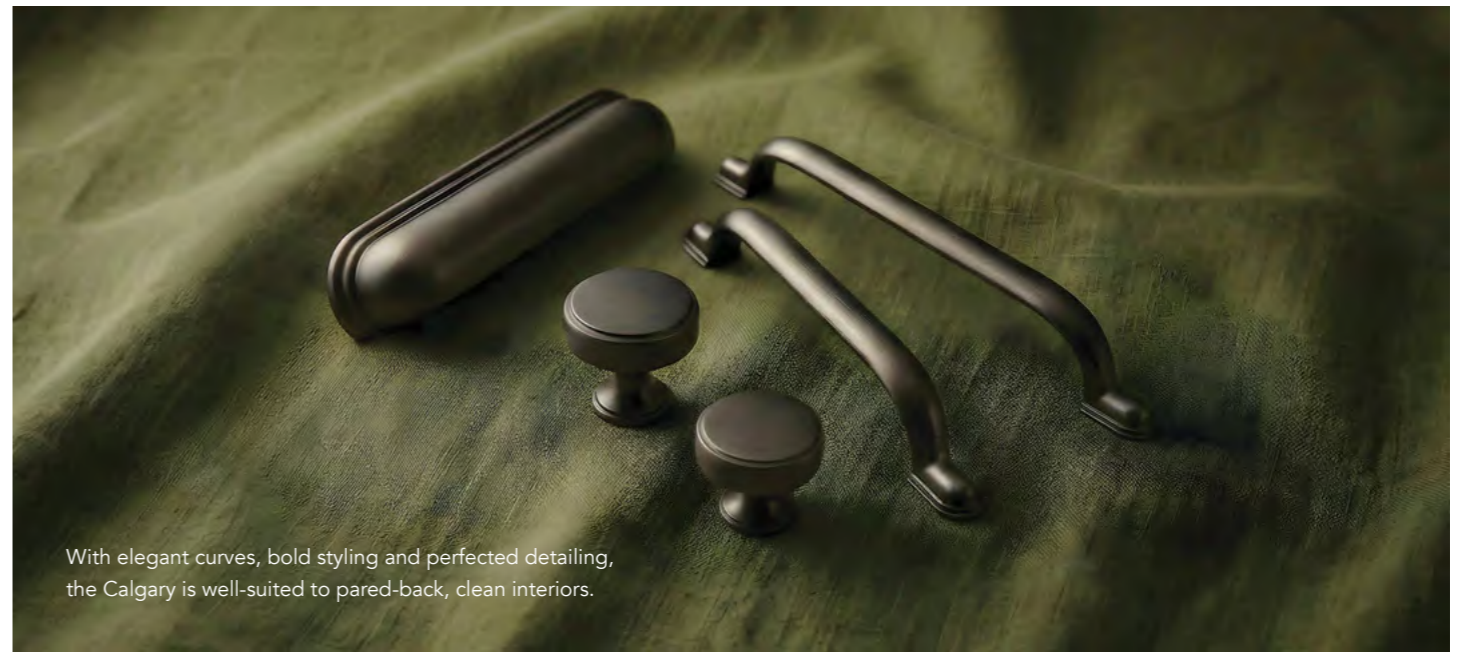




05

# TRANSITIONAL

Windsor | Calgary | Chambery | Stratford | Georgia | Marlborough |  
Arundel | Chichester | Malvern



With elegant curves, bold styling and perfected detailing, the Calgary is well-suited to pared-back, clean interiors.

## CALGARY

Shown above left in Brushed Satin Brass, above right in Brushed Iron and to the right in American Bronze

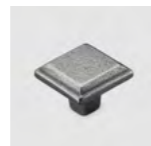
| Base Material - Mazak |      | FC  | L   | W/D  | H/P |
|-----------------------|------|-----|-----|------|-----|
| KB-M-4163-35          | Knob | -   | -   | 35   | 29  |
| KB-M-4163-40          | Knob | -   | -   | 40   | 37  |
| HN-M-4160-128         | Cup  | 128 | 155 | 31   | 29  |
| HN-M-4271-128         | Pull | 128 | 169 | 16.5 | 29  |
| HN-M-4271-160         | Pull | 160 | 201 | 16.5 | 29  |



## WINDSOR

Shown in Iron

| Base Material - Iron |      | FC  | L   | W/D | H/P |
|----------------------|------|-----|-----|-----|-----|
| KB-I-3951-34         | Knob | -   | -   | 34  | 25  |
| HN-I-3952-128        | Pull | 128 | 151 | 25  | 28  |
| HN-I-3952-160        | Pull | 160 | 185 | 25  | 28  |



Iron



Matt Black



American Bronze

American Copper

Brushed Satin Brass

Brushed Satin Nickel

Polished Nickel

Black Nickel

Matt Black

Brushed Iron



## MIX & MATCH

Pair the Calgary knob with the Banbury handle, both in American Bronze (p30), to create a balanced and coordinated look with subtle contrast.



## CHAMBERY

Shown in Iron

| Base Material - Iron |      | FC  | L   | W/D | H/P |
|----------------------|------|-----|-----|-----|-----|
| HN-I-4099-128        | Pull | 128 | 174 | 16  | 25  |
| HN-I-4099-160        | Pull | 160 | 206 | 16  | 25  |



Iron



## STRATFORD

Shown in All Finishes

| Base Material - Mazak |      | FC  | L   | W/D | H/P  |
|-----------------------|------|-----|-----|-----|------|
| HN-M-4216-160         | Pull | 160 | 177 | 17  | 32.5 |



Chrome



American Copper



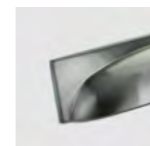
## GEORGIA

Shown in Brushed Satin Nickel

| Base Material - Mazak |      | FC  | L   | W/D | H/P |
|-----------------------|------|-----|-----|-----|-----|
| KB-M-3840-32          | Knob | -   | 32  | 32  | 28  |
| HN-M-3841-128         | Pull | 128 | 177 | 24  | 28  |
| HN-M-3843-96          | Cup  | 96  | 145 | 41  | 27  |



Chrome



Brushed Satin Nickel





# MARLBOROUGH

Shown left hand page and top right in American Bronze and below in Brushed Iron

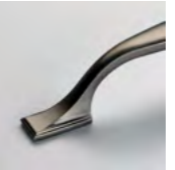
| Base Material - Mazak |      | FC  | L   | W/D | H/P |
|-----------------------|------|-----|-----|-----|-----|
| HN-M-4148-128         | Pull | 128 | 172 | 15  | 30  |
| HN-M-4148-160         | Pull | 160 | 204 | 15  | 30  |



American Bronze



Brushed Satin Nickel



Brushed Iron



Chrome



Polished Nickel



Brushed Copper



American Copper





## ARUNDEL

Shown in Chrome

| Base Material - Mazak |      | FC  | L   | W/D | H/P |
|-----------------------|------|-----|-----|-----|-----|
| HN-M-4200-192         | Pull | 192 | 205 | 14  | 30  |



Black Nickel



Chrome



## CHICHESTER

Shown in Matt Black

| Base Material - Mazak |      | FC  | L   | W/D | H/P |
|-----------------------|------|-----|-----|-----|-----|
| HN-M-4218-160         | Pull | 160 | 178 | 18  | 28  |



Matt Black



Chrome



## MALVERN

Shown in Brushed Iron

| Base Material - Mazak |      | FC  | L   | W/D | H/P |
|-----------------------|------|-----|-----|-----|-----|
| KB-M-3939-30          | Knob | -   | -   | 30  | 30  |
| KB-M-3939-35          | Knob | -   | -   | 35  | 30  |
| HN-M-3938-96          | Pull | 96  | 176 | 20  | 30  |
| HN-M-3938-128         | Pull | 128 | 208 | 20  | 30  |



American Bronze



Matt Black



Black Nickel



Chrome



Brushed Copper



Brushed Satin Nickel



American Copper



Brushed Iron



### MIX & MATCH

Pair the Malvern knob with the Alwick handle, both in Black Nickel (p33) to create a bold, cohesive look with a contemporary edge.

#### How do I order?

Please phone or e-mail our Birmingham Headquarters:

T: +44 (0) 121 622 1074

E: [general@crofts.co.uk](mailto:general@crofts.co.uk)

#### What are our hours of business?

Monday – Thursday 08:00 – 16:30

Friday 08:15 – 12:30

#### How do we interpret your dimensional information?

All of our handle measurements are in metric sizes with dimensions given in millimetres except a few select products for our overseas customers. A few of our larger handles may be tapped with M6 threads. Please ask our Customer Support Team for confirmation when ordering. Dimensions of cast iron hardware may vary slightly due to the manufacturing process.

#### Standard sizing is:

64mm, 96mm, 128mm 160mm fixing centres for cup handles.

128mm, 160mm, 192mm, 256mm & 305mm fixing centres for pull handles.

#### How are your products packed?

Our handles are packaged in protective packaging made from recycled materials.

Handles come with the appropriate screws, usually an M4 25mm and 45mm snap-off per fixing hole or M6 for larger appliance handles. Box quantities range from 10 – 50 pieces depending upon the size of the product. For non-standard packaging and alternative screw lengths, please contact our Customer Support Team on + 44 (0) 121 622 1074.

#### How do we fit your products?

Please hand-tighten the products using the screws provided and avoid using power tools for installation.

#### How can I hear about new developments in your company?

We have a team of Regional and International Account Managers and a helpful Customer Support team that are up to date with developments and ready to take calls and respond to emails.

Alternatively sign up to our mailing list or:

Follow us on socials: [crofts\\_assinder](#)

#### What are your lead times?

Although lead times may clearly alter between country regions, 98% of UK orders are satisfied from stock and despatched within 2-3 working days.

Particularly large quantities may occasionally be subject to a lengthier lead time, and we would always encourage customers to proactively speak to our Customer Support Team as early as possible and we will do everything possible to help meet any critical delivery dates.

#### Can we reproduce C&A product images?

All copyright and intellectual property rights are the property of Crofts & Assinder Ltd. No persons can reproduce any part of this catalogue by any means, electronic or mechanical without prior written permission from the Company.

#### What are your Terms & Conditions?

Our Terms and Conditions may be obtained from our Customer Support Team and they accompany all account application forms as well as being available on our website.

#### Error & Omissions Excepted

Due to our policy of continued product development, we reserve the right to alter materials and specifications without prior notice. Please contact our Sales Team for further information.

Although every care has been taken to ensure the accuracy of the information in this catalogue, we cannot accept responsibility for omissions or inaccuracies.

#### Non-Standard Finishes

Standard finishes are shown against each product displayed.

In cases where non-standard finishes are requested, MOQ's and longer lead times may apply as these will be produced on a bespoke basis. Due to the nature of our products, many of which are hand finished, there may be some variations in finish from batch to batch.

#### Product Care Instructions

To prolong the life of this product we recommend cleaning when required using lukewarm water on a damp, well wrung-out lint free cloth. Also, the use of a soft-bristled toothbrush can be used for the removal of dirt trapped in the knurling or grooves. Once clean, ensure to thoroughly dry with a soft cloth, paying particular attention to the base of the stem of the product. A light coating of natural wax will help seal any chips or scratches.

We strongly advise never to use commercial chemical or abrasive cleaning products on any Crofts & Assinder products, including antibacterial cleaners. These will remove the protective coating and the product may become damaged, possibly changing the appearance as a result. Also, little chips or scratches in the lacquer will allow the air to tarnish the metal underneath over time. So particular care is required by following these instructions, otherwise the 12-month warranty may become invalid.



# FINISHES

The table below illustrates the range of finishes that can be applied to specific base materials. Standard finishes are highlighted throughout the catalogue next to each product. Please note that for non-standard finishes minimum order quantities and longer lead times may apply.

| Finish  | Iron | Mazak | Brass | Aluminium |
|---|------|-------|-------|-----------|
|  American Bronze (AB)          |      | ☑     |       |           |
|  American Copper (AC)          |      | ☑     |       |           |
|  Black Nickel                  |      | ☑     | ☑     |           |
|  Brushed Copper (BC)           |      | ☑     |       | ☑         |
|  Brushed Gold                  |      | ☑     |       |           |
|  Brushed Iron                  |      | ☑     |       |           |
|  Brushed Satin Brass (BSB)     |      | ☑     | ☑     |           |
|  Brushed Satin Nickel (BSN)  |      | ☑     | ☑     | ☑         |
|  Chrome                      |      | ☑     | ☑     | ☑         |
|  Iron Effect                 |      | ☑     |       |           |
|  Iron                        | ☑    |       |       |           |
|  Matt Black                  | ☑    | ☑     | ☑     | ☑         |
|  Nickel Pewter (NP)          |      | ☑     |       |           |
|  Polished Brass Laquer (PLB) |      |       | ☑     |           |
|  Polished Nickel (PN)        |      | ☑     | ☑     |           |

## At the Forefront of Sustainability in the Industry

Our uniquely British design ethos is built on a long history of innovation and quality, but our focus remains firmly on the future. We are committed to creating products responsibly, nurturing our people, respecting our partners, and reducing our impact on the planet.

This includes the use of recycled materials wherever possible, long product lifecycles, and ethical trading partnerships. We believe sustainability is achieved not through short term solutions, but through thoughtful design, considered processes and continual improvement, as well as a commitment that all of our products can be recycled at the end of their life cycle.



## Colour Reproduction

Due to photographic and printing processes some colours may not be a true representation of the product. Please see actual sample for colour.

## Changes & Modifications

From time to time, as part of our continual product improvement program, Crofts & Assinder may need to modify tooling or design aspects. During this process small changes to the product may be applied. Crofts & Assinder reserves the right to make these changes without prior notification.

## Intellectual Property

We protect and defend our intellectual property rights globally, particularly by means of Design Patents in the USA and Registered Designs in the UK & Europe.

*Crofts & Assinder is an active member of ACID, a hard hitting action group committed to combating copyright theft. Please visit [www.acid.co.uk](http://www.acid.co.uk) for more details.*



## Acknowledgements

The authors and publishers are grateful for the kind permission of the following copyright owners to reproduce their images throughout this catalogue on the pages indicated:

P4 & P34 & P40 - The Cast Iron Bath Company

P5 & P31 & P58 - Sculleries of Stockbridge

P42 - The Symphony Group PLC

P48 - Chisholm Design | Photographed by Julia Currie Photography

P54 - Mereway Kitchens

All remaining product photography provided by Ross Vincent Photography.



150  
1875 2025

CROFTS & ASSINDER

EST. 1875

UNIQUELY BRITISH DESIGN

T : +44 (0) 121 622 1074

E : [general@crofts.co.uk](mailto:general@crofts.co.uk)

W : [www.crofts.co.uk](http://www.crofts.co.uk)

S: [crofts\\_assinder](https://www.crofts.co.uk/crofts-assinder)

C&A03/26