

STYLE GUIDE
CROFTS & ASSINDER

EST. 1875

INIMITABLE QUALITY & DESIGN FOR 150 YEARS

You could spend a lifetime discovering unique British buildings, furniture and landmarks; we have. From the very beginning Crofts & Assinder has specialised in the design and manufacture of extraordinary cabinet handles and luxury fittings.

Established in 1875, George Crofts and Frederick Assinder commenced trading as brass founders at the heart of British industry in Birmingham, England. To this day, Crofts & Assinder has stood the test of time and remains in the same hands of the families that created the company at the outset. We endeavour to make the ordinary extraordinary, combining a unique blend of our British heritage with timeless design and quality.

Today we're proud to introduce our all new Style Guide. Featuring a collection of our finest and most popular designs, thoughtfully chosen for the refined customer. In this edition, we offer style advice, including which of our hardware ranges we would recommend to match together, helping you select the best handles for your clients, for every project.

We hope you enjoy the 2026 Style Guide and we look forward to continuing to bring exceptional British design to market with every collection we launch.



KEY

FC	Fixing Centres
L	Length
W/D	Width/Diameter
H/P	Height/Projection

All dimensions are approximate and given in millimetres (mm).

CONTENTS

01

DESIGNER

Fenchurch	Kingston
Stockholm	Corbusier
Retro	Torbay
Avon	Dorchester



05

TRANSITIONAL

Windsor	Stratford	Arundel
Calgary	Georgia	Chichester
Chambery	Marlborough	Malvern



02

HERITAGE

Keswick	Wexford	Winchester
Hamilton	Montreal	Warwick
Leamington	Bordeaux	Amersham

06

FINISHES & FAQs

Finishes Table
Frequently Asked Questions

03

CONTEMPORARY

Chester	Alnwick
Banbury	Midhurst
Kew	

07

ADDITIONAL NOTES

Sustainability
Colour Reproduction
Changes & Modifications
Intellectual Property

04

SHAKER

Salcombe	Buxton
Ludlow	Monmouth
Anney	Brecon
George	



08

COMPLIANCE

Accreditations
Acknowledgements



01

DESIGNER

Fenchurch | Stockholm | Retro | Avon | Kingston | Corbusier

Torbay | Dorchester



FENCHURCH PULL HANDLE & KNOB

Chic, contemporary design at its finest. Provoking an air of luxury which Crofts & Assinder is renowned for, the Fenchurch exudes a character of its own. Utilising alternating facets to form a visual spectacle, when viewed from different angles, the surface patterning plays with the light creating a mesmerising effect, dependent upon how you view the product.



Base Material - Mazak

	EC	L	W/D	H/P
HN-M-4298-160 Pull	160	273	14	43
HN-M-4298-256 Pull	256	369	14	43
KB-M-4297-35 Knob	-	-	35	32

Shown left in Brushed Satin Brass and above in Chrome



Brushed Satin Brass



American Bronze



Brushed Satin Nickel



Chrome



SIMPLE. ELEGANT. LUXURY.

Crofts & Assinder's take on the wonderful world of Scandinavian design. The tapered legs on this bewitching handle look effortlessly chic and ensure that the range stands out due to the inherent beauty found in the finer details.

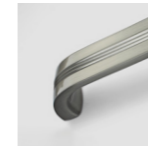
RETRO

Shown in Chrome

Base Material - Mazak		FC	L	W/D	H/P
HN-M-3923-160	Pull	160	171	20	26



Chrome



Brushed Satin Nickel



MIX & MATCH

Pair the Retro handle with the Salcombe knob, both in Chrome (p36), for a sleek, modern finish with subtle vintage charm.



STOCKHOLM

Shown in All Finishes

Base Material - Mazak		FC	L	W/D	H/P
KB-M-4251-56	Knob	-	56	24	24
HN-M-4245-128	Pull	128	160	24	32



Brushed Satin Brass



Matt Black



Chrome





COMFORT SHAPED BY DESIGN

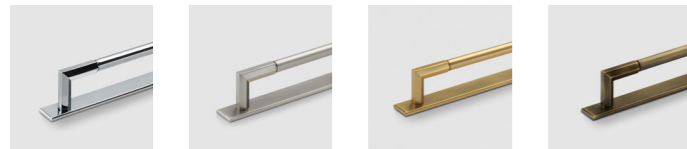
Featuring the current trend for soft geometry, with hexagonal facets creating the leg structure, and a rounded body for tactile handling, the Avon evidences that comfort and exceptional design can go hand-in-hand.



AVON

Shown in Brushed Satin Nickel

Base Material - Mazak		FC	L	W/D	H/P
KB-M-4299-34	Knob	-	74	34	31
KB-M-4299-38	Knob	-	74	38	33
HN-M-4300-160	Pull	160	203	23	38
HN-M-4300-256	Pull	256	299	23	38



Chrome Brushed Satin Nickel Brushed Satin Brass American Bronze



KINGSTON

Shown in Iron



Base Material - Iron		FC	L	W/D	H/P
HN-I-4187-128	Pull	128	160	16	46
HN-I-4187-160	Pull	160	193	16	46



Iron Matt Black

The Kingston range looks incredible in industrial style interiors. Dark, moody colours complement the masculine feel and exude luxe lifestyle.

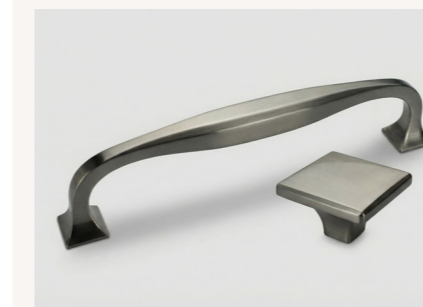
CORBUSIER

Shown in Brushed Satin Nickel

Base Material - Mazak		FC	L	W/D	H/P
KB-M-3920-34	Knob	-	34	34	23
HN-M-3921-128	Pull	128	142	14	34
HN-M-3921-160	Pull	160	174	14	34

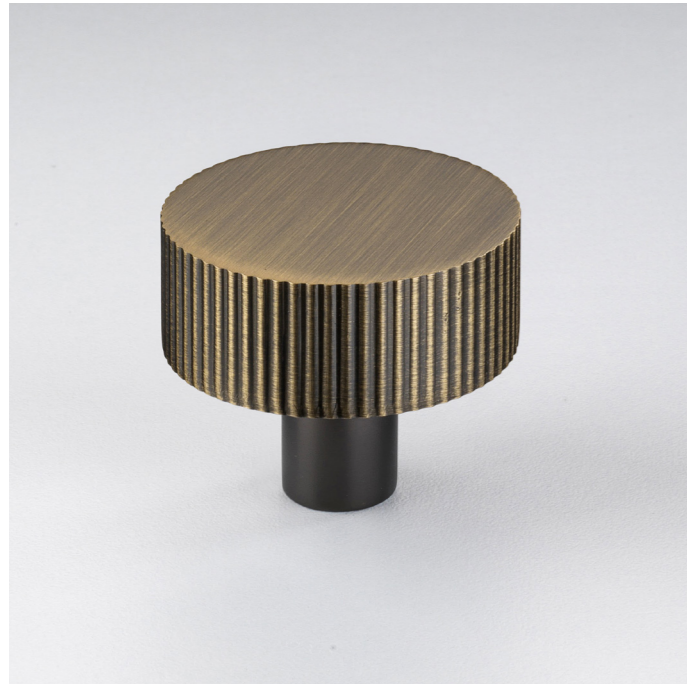


Chrome Brushed Satin Nickel



MIX & MATCH

Pair the Corbusier handle with the Georgia knob, both in Brushed Satin Nickel (p47), to create a clean, cohesive look with a refined finish.



TORBAY

Shown in American Bronze

Base Material - Mazak		FC	L	W/D	H/P
KB-M-4301-34	Knob	-	-	34	29
HN-M-4302-160	Pull	160	244	12	37
HN-M-4302-256	Pull	256	346	12	37



Brushed Satin Brass



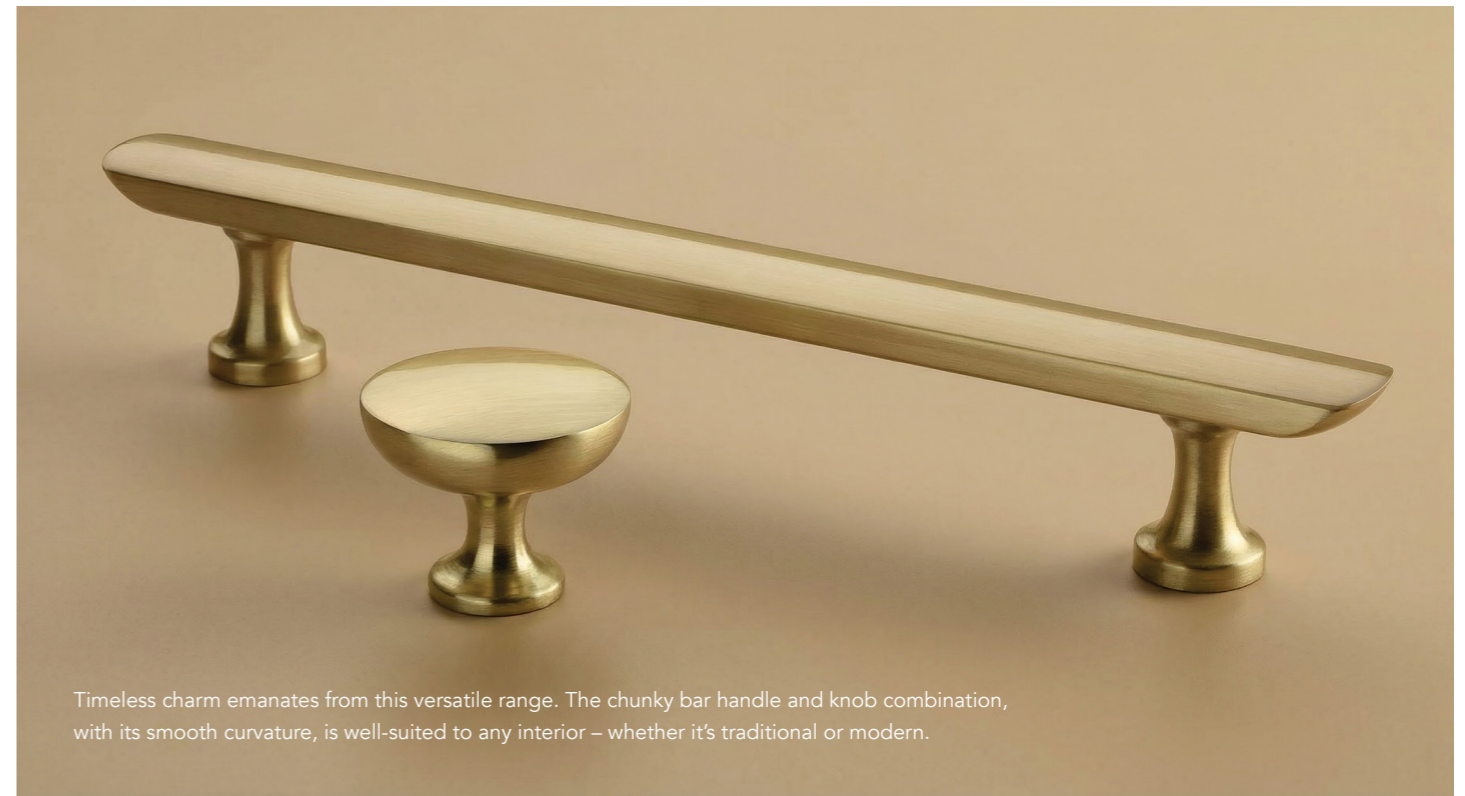
Brushed Satin Nickel



Chrome



American Bronze



Timeless charm emanates from this versatile range. The chunky bar handle and knob combination, with its smooth curvature, is well-suited to any interior – whether it's traditional or modern.



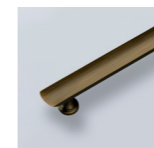
DORCHESTER

Shown above in Brushed Satin Brass and to the right in All Finishes

Base Material - Mazak		FC	L	W/D	H/P
KB-M-4247-38	Knob	-	-	38	31
HN-M-4246-160	Pull	160	214	21	34



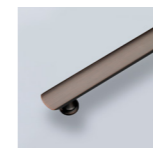
Chrome



American Bronze



Brushed Satin Brass



American Copper



MIX & MATCH

Pair the Dorchester knob with the Marlborough handle, (p49) to create a timeless, coordinated look with a warm, classic finish.



02

HERITAGE

Keswick | Hamilton | Leamington | Wexford | Montreal
| Bordeaux | Winchester | Warwick | Amersham

KESWICK

The Keswick is beautiful yet brutal, suiting both traditional country cottage interiors as well as elegant spaces where refinement is key.



Base Material - Mazak		FC	L	W/D	H/P
KB-M-4257-34	Knob	-	-	34	25
KB-M-4257-38	Knob	-	-	38	28
HN-M-4258-128	Pull	128	147	25	28
HN-M-4258-160	Pull	160	179	25	28
HN-M-4259-96	Cup	96	128	36	27

Shown in American Bronze



American Bronze

American Copper

Brushed Satin Nickel

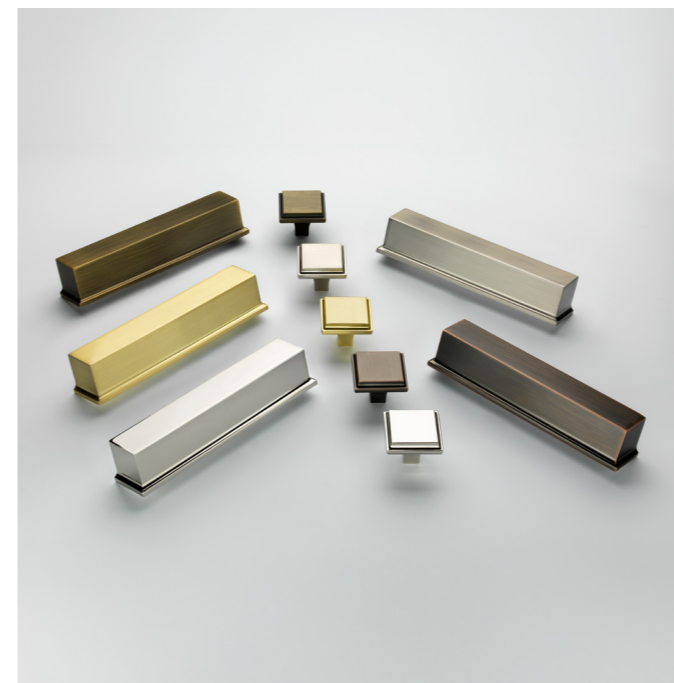
Chrome

Brushed Satin Brass



TRADITIONAL WITH A CONTEMPORARY TWIST

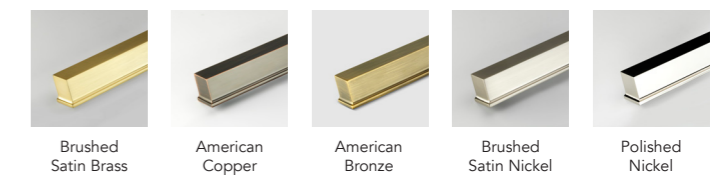
The Hamilton range looks at home in any setting. The linear detailing and stepped edge come together to create a true modern classic.



HAMILTON

Shown in All Finishes

Base Material - Mazak		FC	L	W/D	H/P
KB-M-4248-34	Knob	-	-	34	28
HN-M-4159-128	Cup	128	143	28	28



Brushed Satin Brass

American Copper

American Bronze

Brushed Satin Nickel

Polished Nickel



A DECAGONAL OBJET D'ART

The Leamington presents a fresh look at the art-deco genre. With the classy and stylistic flair that this period was known for, the broad face and faceted edges combine to create an exquisite and enduring range.



LEAMINGTON

Shown in Brushed Satin Brass

Base Material - Mazak		FC	L	W/D	H/P
KB-M-4243-35	Knob	-	-	35	28
KB-M-4243-40	Knob	-	-	40	32
HN-M-4256-160	Pull	160	202	23	31



Chrome



Brushed Satin Brass

The art-deco inspired Leamington feels at home in luxury interiors with a classical vibe.



WEXFORD

Shown in Nickel Pewter

Base Material - Brass		FC	L	W/D	H/P
HN-B-4463	Cup	64	96	29	32
KB-B-4384-30	Knob	-	-	30	27
KB-B-4384-35	Knob	-	-	35	34



Nickel Pewter

MONTREAL

Shown in Iron

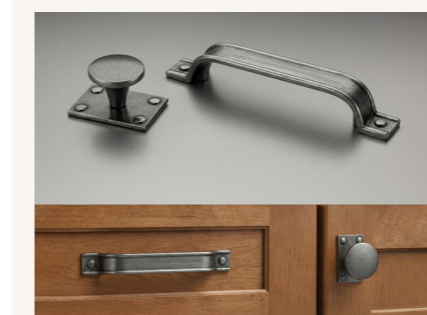
Base Material - Iron		FC	L	W/D	H/P
KB-I-4165-38	Knob	-	58	38	33
HN-I-4164-96	Cup	96	138	54	29



Iron



Matt Black



MIX & MATCH

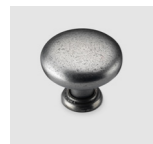
Match the Montreal knob with the Ancey handle (p38) to create a cohesive, seamless, rustic look throughout the space.



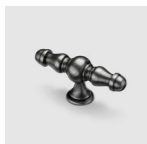
BORDEAUX

Shown in Iron

Base Material - Iron		FC	L	W/D	H/P
KB-I-3624-35	Knob	-	-	35	37
KB-I-3624-48	Knob	-	-	48	39
HN-I-3626-128	Pull	128	153	25	40
KB-I-3625-90	T- Bar	-	90	25	42



Iron Knob



Iron T-Bar



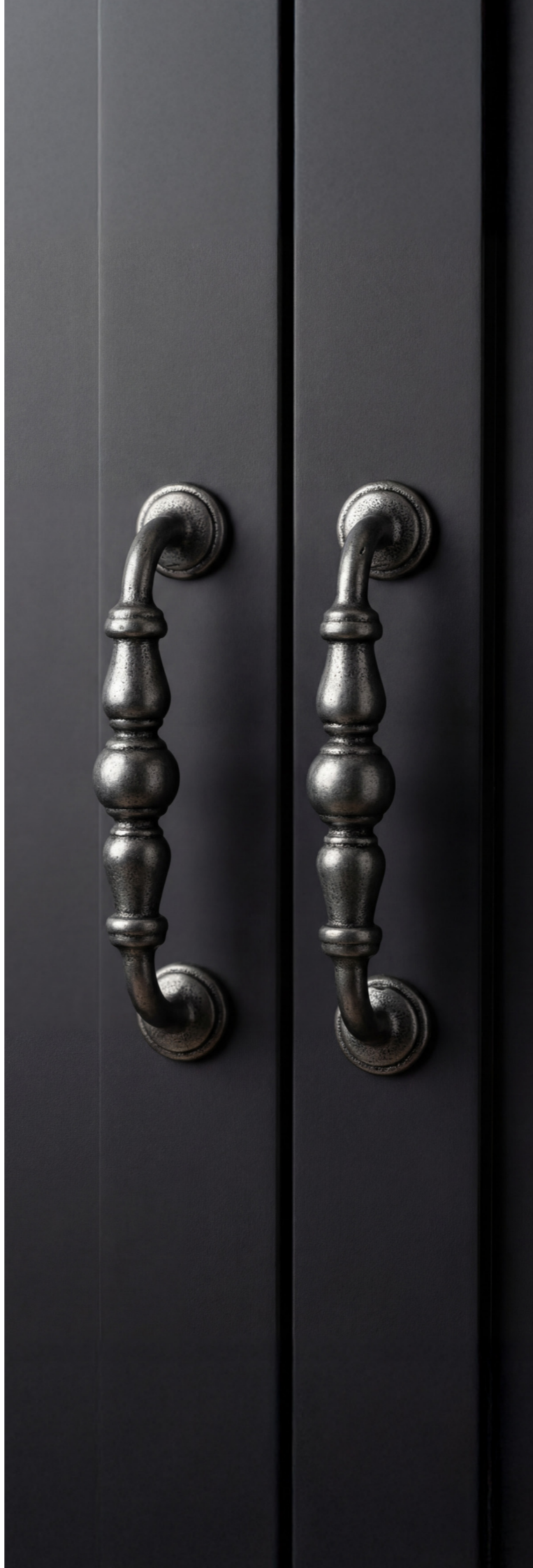
WINCHESTER

Shown in Iron

Base Material - Iron		FC	L	W/D	H/P
KB-I-3983-34	Knob	-	-	34	28
KB-I-3983-38	Knob	-	-	38	30
HN-I-3984-128	Pull	128	143	15	36
HN-I-3984-160	Pull	160	175	15	36



Iron





AMERSHAM

Shown in Polished Brass

Base Material - Brass		FC	L	W/D	H/P
HN-B-3980-53	Cup	49	53	29	17
HN-B-3980-98	Cup	94	98	36	23



Polished Brass

Chrome



Front facing screws included as standard.

WARWICK

Shown in Iron

Base Material - Iron			FC	L	W/D	H/P
55(a)	HN-I-3175-128	Pull	128	144	27	18
55(b)	HN-I-3174-128	Pull	128	146	15	28
55(c)	HN-I-3078-96	Pull	96	150	21	36
55(d)	HN-I-3173-64	Cup	64	102	44	23
55(d)	HN-I-3172-64	Cup	64	100	41	23
55(e)	KB-I-3379-34	Knob	-	-	34	29
55(e)	KB-I-3379-38	Knob	-	-	38	31
55(f)	BP-I-3380-22	Backplate	-	-	22	4
55(f)	BP-I-3380-25	Backplate	-	-	25	5
55(g)	KB-I-3159	Knob	-	-	28	40
55(h)	KB-I-2866-34	Knob	-	-	34	29
55(h)	KB-I-2866-38	Knob	-	-	38	29
55(i)	KB-I-3257-35	Knob	-	-	35	24
55(j)	KB-I-3161	Knob	-	38	20	30
55(k)	BP-I-3158	Backplate	-	-	32	4

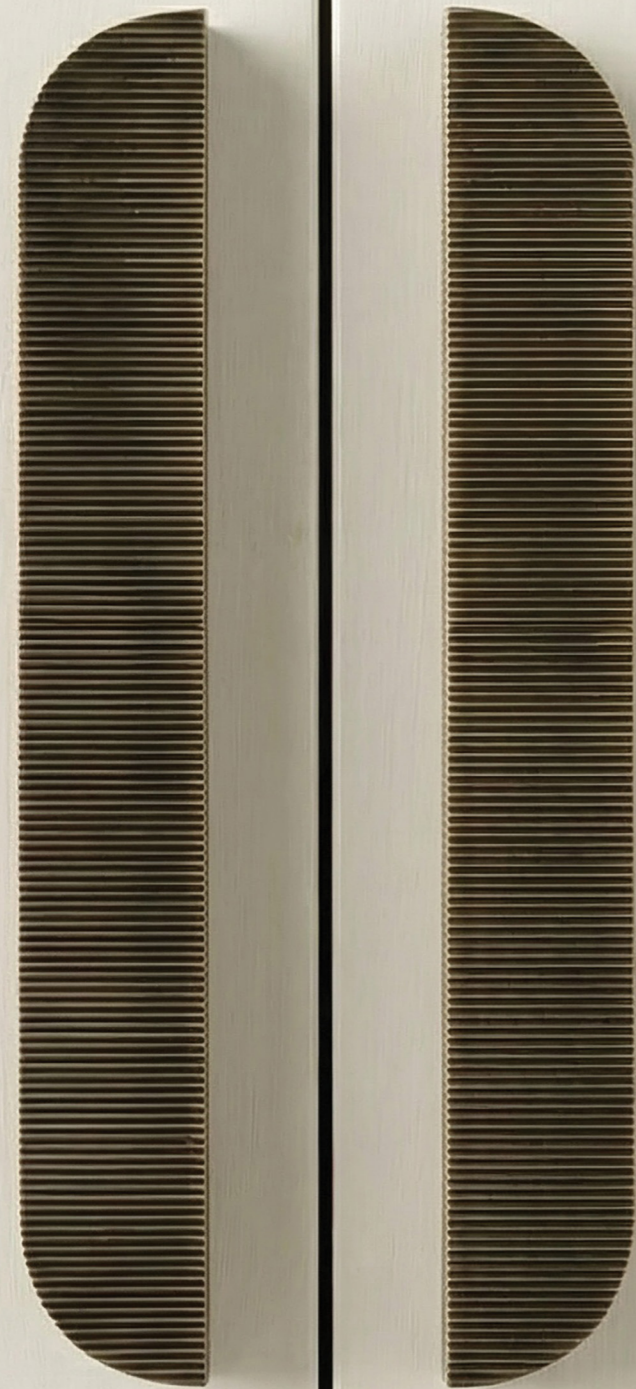




03

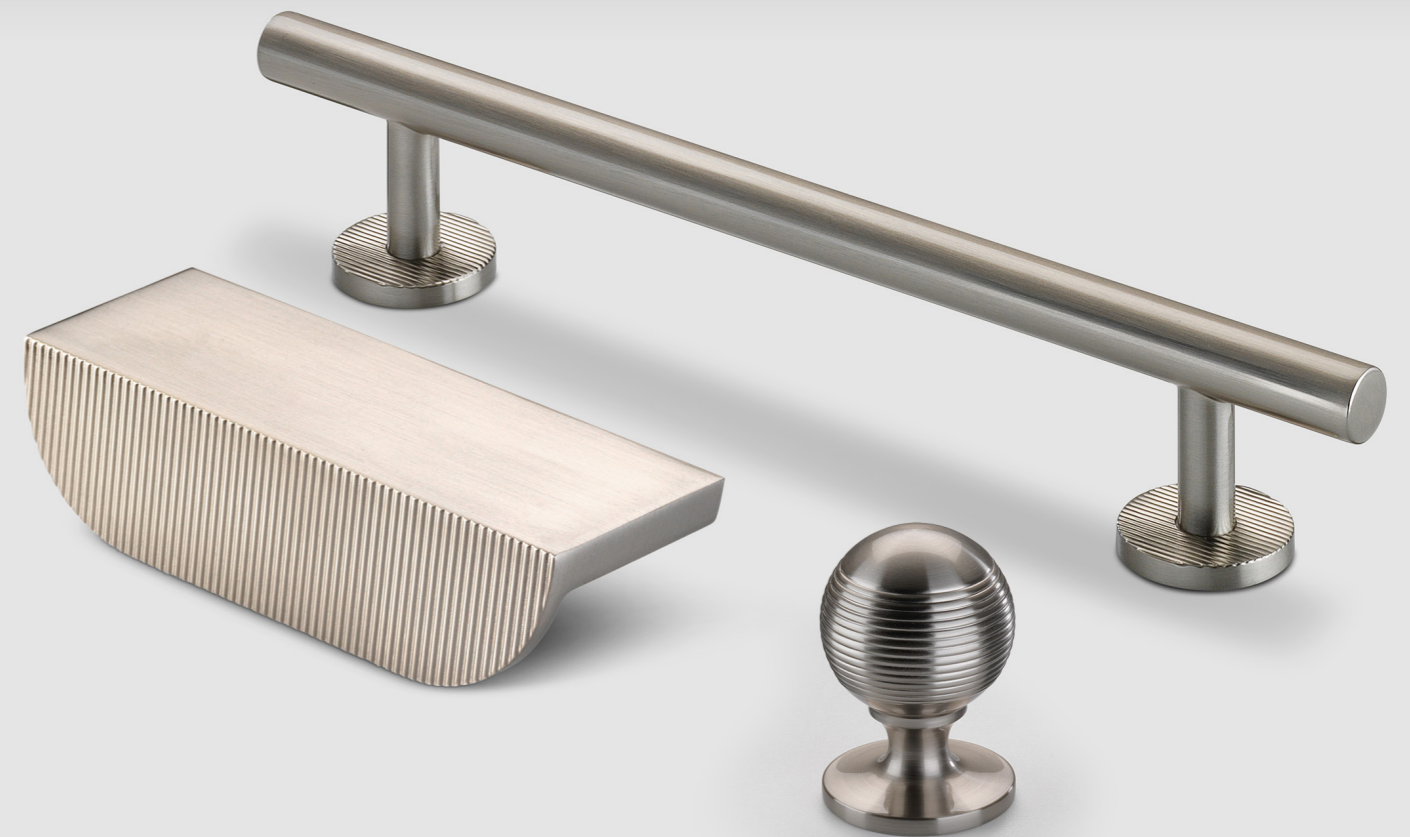
CONTEMPORARY

Chester | Banbury | Kew | Alnwick | Midhurst



CHESTER

Exceptional yet simple design with a beautiful reeded element, ensures that the Chester remains refined and sophisticated while fitting with both modern and classical interiors.



Base Material - Mazak

		FC	L	W/D	H/P
KB-M-4294-32	Knob	-	-	32	47
HN-M-4295-64	Cup	64	85	24	24
HN-M-4295-160	Cup	160	181	24	24
HN-M-4296-160	Pull	160	220	28	38
HN-M-4296-256	Pull	256	316	28	38

Shown left in American Bronze and above in Brushed Satin Nickel



Brushed Satin Brass



American Bronze



Brushed Satin Nickel



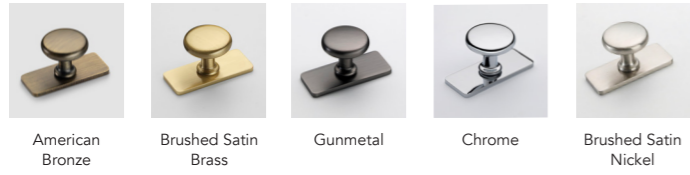
Chrome



BANBURY

Shown in Chrome, American Bronze and Brushed Satin Brass

Base Material - Mazak		FC	L	W/D	H/P
KB-M-4252-32	Knob	-	58	32	32
HN-M-4244-128	Pull	128	170	21	38



INDUSTRIAL AND UTILITARIAN

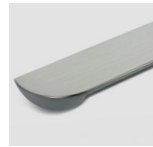
A fusion of industrial and utilitarian principles, the Banbury is both bold and humble. Its softened edges and unostentatious lines, ensure that it is simply sensational.



KEW

Shown in Brushed Gold

Base Material - Mazak		FC	L	W/D	H/P
HN-M-4215-160	Pull	160	190	25.5	25.8



Brushed Satin Nickel



Brushed Gold



ALNWICK

Shown in Black Nickel

Base Material - Mazak		FC	L	W/D	H/P
HN-M-4199-160	Pull	160	170	12	34



Black Nickel



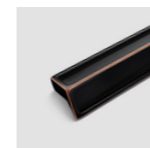
Chrome



MIDHURST

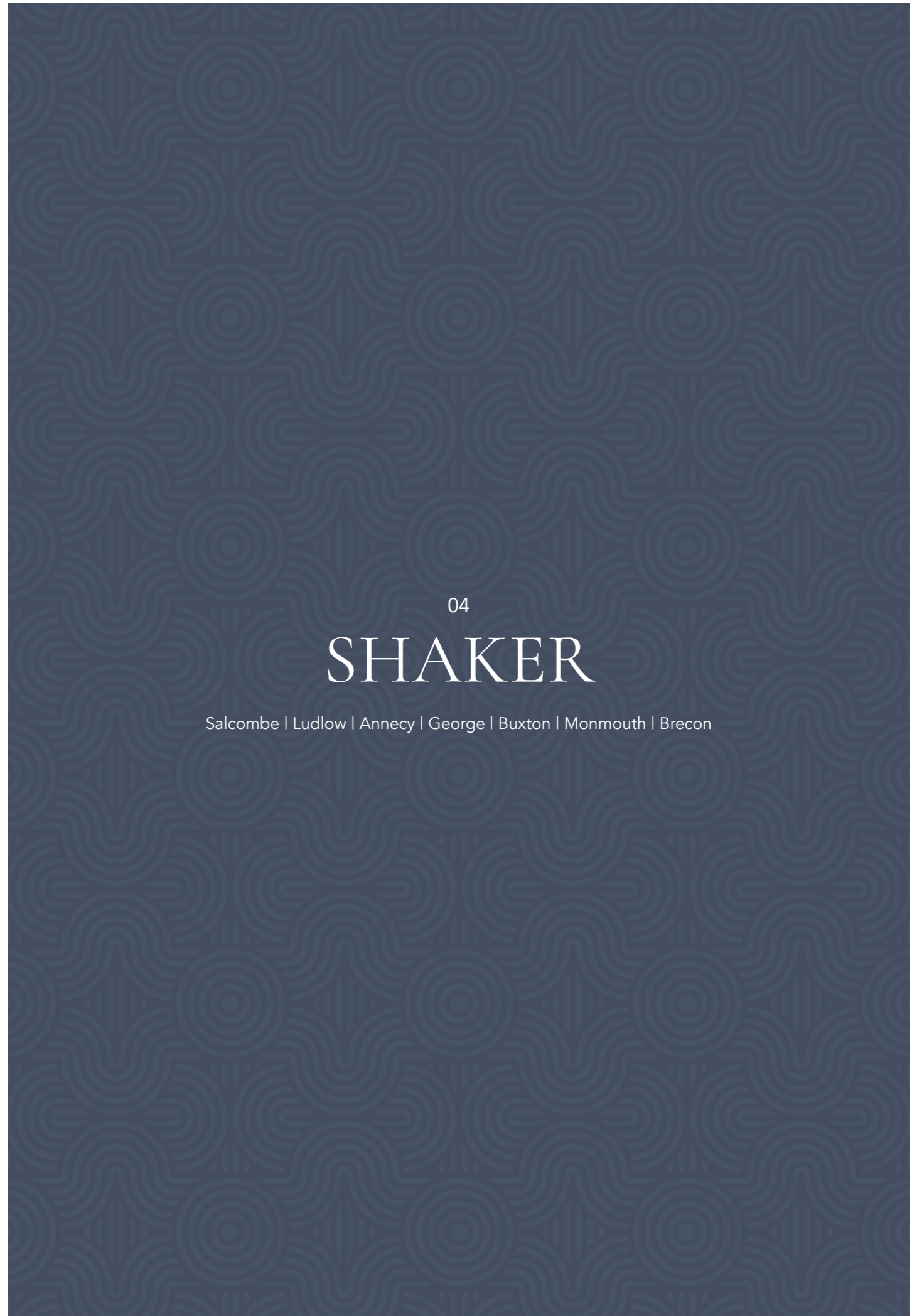
Shown in American Copper

Base Material - Mazak		FC	L	W/D	H/P
HN-M-4217-160	Pull	160	177	20	20



American Copper





04

SHAKER

Salcombe | Ludlow | Anney | George | Buxton | Monmouth | Brecon



LUDLOW

Shown in Iron



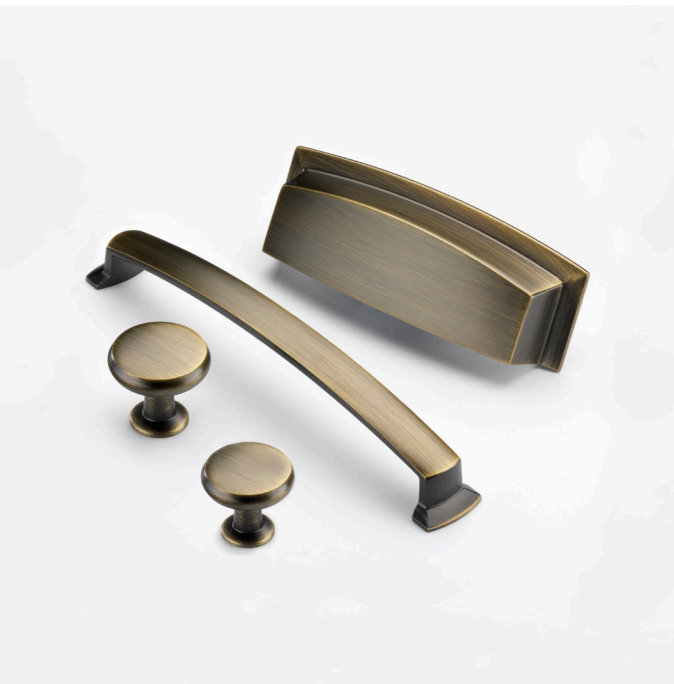
Base Material - Iron		FC	L	W/D	H/P
KB-I-3949	Knob	-	58	20	38
HN-I-3950-128	Pull	128	141	12	36
HN-I-3950-160	Pull	160	176	16	40
HN-I-3950-192	Pull	192	210	17	46



Iron

SALCOMBE

Shown in American Bronze



Base Material - Mazak		FC	L	W/D	H/P
HN-M-4260-96	Cup	96	124	40	26
KB-M-4261-34	Knob	-	-	34	30
KB-M-4261-38	Knob	-	-	38	34
HN-M-4269-160	Pull	160	178	16	27



American Bronze



American Copper



Brushed Satin Brass



Brushed Satin Nickel



Chrome



MIX & MATCH

Pair the Salcombe knob with the Dorchester handle, both in Brushed Satin Brass (p15), for a warm, sophisticated look with timeless elegance.



ANNECY

Shown in Iron

Base Material - Iron		FC	L	W/D	H/P
HN-I-4098-128	Pull	128	164	20	25
HN-I-4098-160	Pull	160	196	20	25



Iron



GEORGE

Shown in Iron

Base Material - Iron		FC	L	W/D	H/P
KB-I-3849-32	Knob	-	32	32	28
HN-I-3851-96	Cup	96	145	27	41
HN-I-3850-128	Pull	128	177	24	28
HN-I-3850-224	Pull	224	268	24	28



Iron

The George range elevates interiors where perfect imperfection is valued - the Bauhaus square edges, softened by the sand-casting process ensure comforting character in every setting.

BUXTON

Shown in Iron

Base Material - Iron		FC	L	W/D	H/P
KB-I-3910-34	Knob	-	-	34	40



Iron

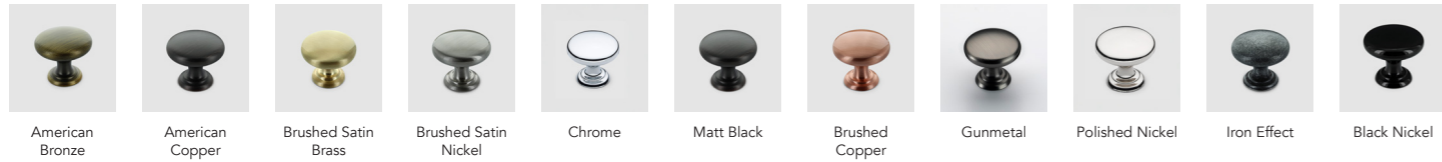




MONMOUTH

Shown top left in American Bronze, bottom left in Brushed Satin Brass and bottom right in Chrome

Base Material - Mazak		FC	L	W/D	H/P
KB-M-3976-32	Knob	-	-	32	27
KB-M-3976-38	Knob	-	-	38	32
HN-M-3978-64	Round Cup	64	104	48	30
HN-M-3981-64	Square Cup	64	104	48	30
HN-M-3977-128	Pull	128	193	20	26
HN-M-3977-160	Pull	160	232	20	26



Timeless design with humble overtones - the sand-cast burred effect of the Brecon gives a more hand-crafted appeal than its precision inspired sister handle, the Monmouth.



BRECON

Shown above in Matt black and right in Iron

Base Material - Iron		FC	L	W/D	H/P
KB-I-3624-35-KO	Knob	-	-	35	33
HN-I-3925-64	Cup	64	104	48	30
HN-I-3924-128	Pull	128	193	20	26





05

TRANSITIONAL

Windsor | Calgary | Chambery | Stratford | Georgia | Marlborough |
Arundel | Chichester | Malvern



With elegant curves, bold styling and perfected detailing, the Calgary is well-suited to pared-back, clean interiors.

CALGARY

Shown above left in Brushed Satin Brass, above right in Gunmetal and to the right in American Bronze

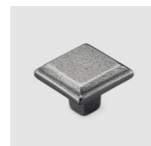
Base Material - Mazak		FC	L	W/D	H/P
KB-M-4163-35	Knob	-	-	35	29
KB-M-4163-40	Knob	-	-	40	37
HN-M-4160-128	Cup	128	155	31	29
HN-M-4271-128	Pull	128	169	16.5	29
HN-M-4271-160	Pull	160	201	16.5	29



WINDSOR

Shown in Iron

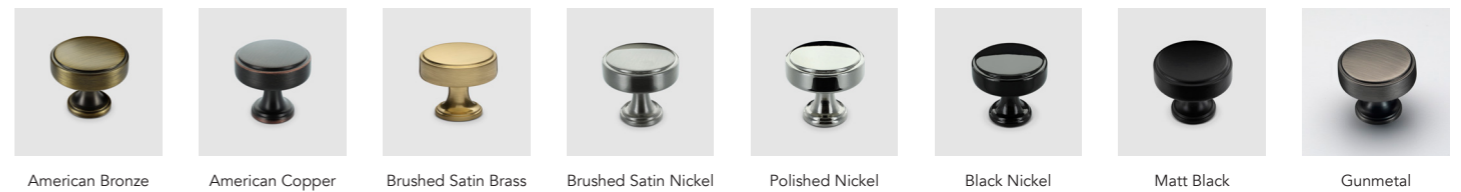
Base Material - Iron		FC	L	W/D	H/P
KB-I-3951-34	Knob	-	-	34	25
HN-I-3952-128	Pull	128	151	25	28
HN-I-3952-160	Pull	160	185	25	28



Iron



Matt Black



American Bronze

American Copper

Brushed Satin Brass

Brushed Satin Nickel

Polished Nickel

Black Nickel

Matt Black

Gunmetal



MIX & MATCH

Pair the Calgary knob with the Banbury handle, both in American Bronze (p30), to create a balanced and coordinated look with subtle contrast.



CHAMBERY

Shown in Iron

Base Material - Iron		FC	L	W/D	H/P
HN-I-4099-128	Pull	128	174	16	25
HN-I-4099-160	Pull	160	206	16	25



Iron



STRATFORD

Shown in All Finishes

Base Material - Mazak		FC	L	W/D	H/P
HN-M-4216-160	Pull	160	177	17	32.5



Chrome



American Copper



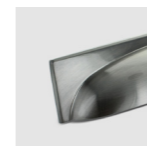
GEORGIA

Shown in Brushed Satin Nickel

Base Material - Mazak		FC	L	W/D	H/P
KB-M-3840-32	Knob	-	32	32	28
HN-M-3841-128	Pull	128	177	24	28
HN-M-3843-96	Cup	96	145	41	27



Chrome



Brushed Satin Nickel

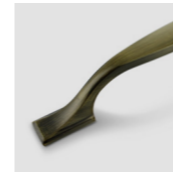




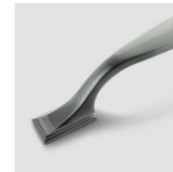
MARLBOROUGH

Shown left hand page and top right in American Bronze and below in Gunmetal

Base Material - Mazak		FC	L	W/D	H/P
HN-M-4148-128	Pull	128	172	15	30
HN-M-4148-160	Pull	160	204	15	30



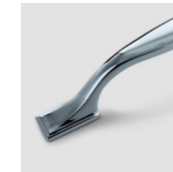
American Bronze



Brushed Satin Nickel



Gunmetal



Chrome



Polished Nickel



Brushed Copper



American Copper





ARUNDEL

Shown in Chrome

Base Material - Mazak		FC	L	W/D	H/P
HN-M-4200-192	Pull	192	205	14	30



Black Nickel



Chrome



MALVERN

Shown in Gunmetal

Base Material - Mazak		FC	L	W/D	H/P
KB-M-3939-30	Knob	-	-	30	30
KB-M-3939-35	Knob	-	-	35	30
HN-M-3938-96	Pull	96	176	20	30
HN-M-3938-128	Pull	128	208	20	30



American Bronze



Matt Black



Black Nickel



Chrome



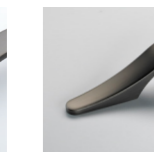
Brushed Copper



Brushed Satin Nickel



American Copper



Gunmetal

CHICHESTER

Shown in Matt Black

Base Material - Mazak		FC	L	W/D	H/P
HN-M-4218-160	Pull	160	178	18	28



Matt Black



Chrome



MIX & MATCH

Pair the Malvern knob with the Alwrick handle, both in Black Nickel (p33) to create a bold, cohesive look with a contemporary edge.



How do I order?

Please phone or e-mail our Birmingham Headquarters:

T: +44 (0) 121 622 1074

E: general@crofts.co.uk

What are our hours of business?

Monday – Thursday 08:00 – 16:30

Friday 08:15 – 12:30

How do we interpret your dimensional information?

All of our handle measurements are in metric sizes with dimensions given in millimetres except a few select products for our overseas customers. A few of our larger handles may be tapped with M6 threads. Please ask our Customer Support Team for confirmation when ordering. Dimensions of cast iron hardware may vary slightly due to the manufacturing process.

Standard sizing is:

64mm, 96mm, 128mm 160mm fixing centres for cup handles.

128mm, 160mm, 192mm, 256mm & 305mm fixing centres for pull handles.

How are your products packed?

Our handles are packaged in protective packaging made from recycled materials.

Handles come with the appropriate screws, usually an M4 25mm and 45mm snap-off per fixing hole or M6 for larger appliance handles. Box quantities range from 10 – 50 pieces depending upon the size of the product. For non-standard packaging and alternative screw lengths, please contact our Customer Support Team on + 44 (0) 121 622 1074.

How do we fit your products?

Please hand-tighten the products using the screws provided and avoid using power tools for installation.

How can I hear about new developments in your company?

We have a team of Regional and International Account Managers and a helpful Customer Support team that are up to date with developments and ready to take calls and respond to emails.

Alternatively sign up to our mailing list or:

Follow us on socials: [crofts_assinder](#)

What are your lead times?

Although lead times may clearly alter between country regions, 98% of UK orders are satisfied from stock and despatched within 2-3 working days.

Particularly large quantities may occasionally be subject to a lengthier lead time, and we would always encourage customers to proactively speak to our Customer Support Team as early as possible and we will do everything possible to help meet any critical delivery dates.

Can we reproduce C&A product images?

All copyright and intellectual property rights are the property of Crofts & Assinder Ltd. No persons can reproduce any part of this catalogue by any means, electronic or mechanical without prior written permission from the Company.

What are your Terms & Conditions?

Our Terms and Conditions may be obtained from our Customer Support Team and they accompany all account application forms as well as being available on our website.

Error & Omissions Excepted

Due to our policy of continued product development, we reserve the right to alter materials and specifications without prior notice. Please contact our Sales Team for further information.

Although every care has been taken to ensure the accuracy of the information in this catalogue, we cannot accept responsibility for omissions or inaccuracies.

Non-Standard Finishes

Standard finishes are shown against each product displayed.

In cases where non-standard finishes are requested, MOQ's and longer lead times may apply as these will be produced on a bespoke basis. Due to the nature of our products, many of which are hand finished, there may be some variations in finish from batch to batch.

Product Care Instructions













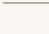
To prolong the life of this product we recommend cleaning when required using lukewarm water on a damp, well wrung-out lint free cloth. Also, the use of a soft-bristled toothbrush can be used for the removal of dirt trapped in the knurling or grooves. Once clean, ensure to thoroughly dry with a soft cloth, paying particular attention to the base of the stem of the product. A light coating of natural wax will help seal any chips or scratches.

We strongly advise never to use commercial chemical or abrasive cleaning products on any Crofts & Assinder products, including antibacterial cleaners. These will remove the protective coating and the product may become damaged, possibly changing the appearance as a result. Also, little chips or scratches in the lacquer will allow the air to tarnish the metal underneath over time. So particular care is required by following these instructions, otherwise the 12-month warranty may become invalid.



FINISHES

The table below illustrates the range of finishes that can be applied to specific base materials. Standard finishes are highlighted throughout the catalogue next to each product. Please note that for non-standard finishes minimum order quantities and longer lead times may apply.

Finish	Iron	Mazak	Brass	Aluminium
 American Bronze (AB)		☑		
 American Copper (AC)		☑		
 Black Nickel		☑	☑	
 Brushed Copper (BC)		☑		☑
 Brushed Gold		☑		
 Gunmetal		☑		
 Brushed Satin Brass (BSB)		☑	☑	
 Brushed Satin Nickel (BSN)		☑	☑	☑
 Chrome		☑	☑	☑
 Iron Effect		☑		
 Iron	☑			
 Matt Black	☑	☑	☑	☑
 Nickel Pewter (NP)		☑		
 Polished Brass Laquer (PLB)			☑	
 Polished Nickel (PN)		☑	☑	



At the Forefront of Sustainability in the Industry

Our uniquely British design ethos is built on a long history of innovation and quality, but our focus remains firmly on the future. We are committed to creating products responsibly, nurturing our people, respecting our partners, and reducing our impact on the planet.

This includes the use of recycled materials wherever possible, long product lifecycles, and ethical trading partnerships. We believe sustainability is achieved not through short term solutions, but through thoughtful design, considered processes and continual improvement, as well as a commitment that all of our products can be recycled at the end of their life cycle.



Colour Reproduction

Due to photographic and printing processes some colours may not be a true representation of the product. Please see actual sample for colour.

Changes & Modifications

From time to time, as part of our continual product improvement program, Crofts & Assinder may need to modify tooling or design aspects. During this process small changes to the product may be applied. Crofts & Assinder reserves the right to make these changes without prior notification.

Intellectual Property

We protect and defend our intellectual property rights globally, particularly by means of Design Patents in the USA and Registered Designs in the UK & Europe.

Crofts & Assinder is an active member of ACID, a hard hitting action group committed to combating copyright theft. Please visit www.acid.co.uk for more details.



Acknowledgements

The authors and publishers are grateful for the kind permission of the following copyright owners to reproduce their images throughout this catalogue on the pages indicated:

P4 & P34 & P40 - The Cast Iron Bath Company

P5 & P31 & P58 - Sculleries of Stockbridge

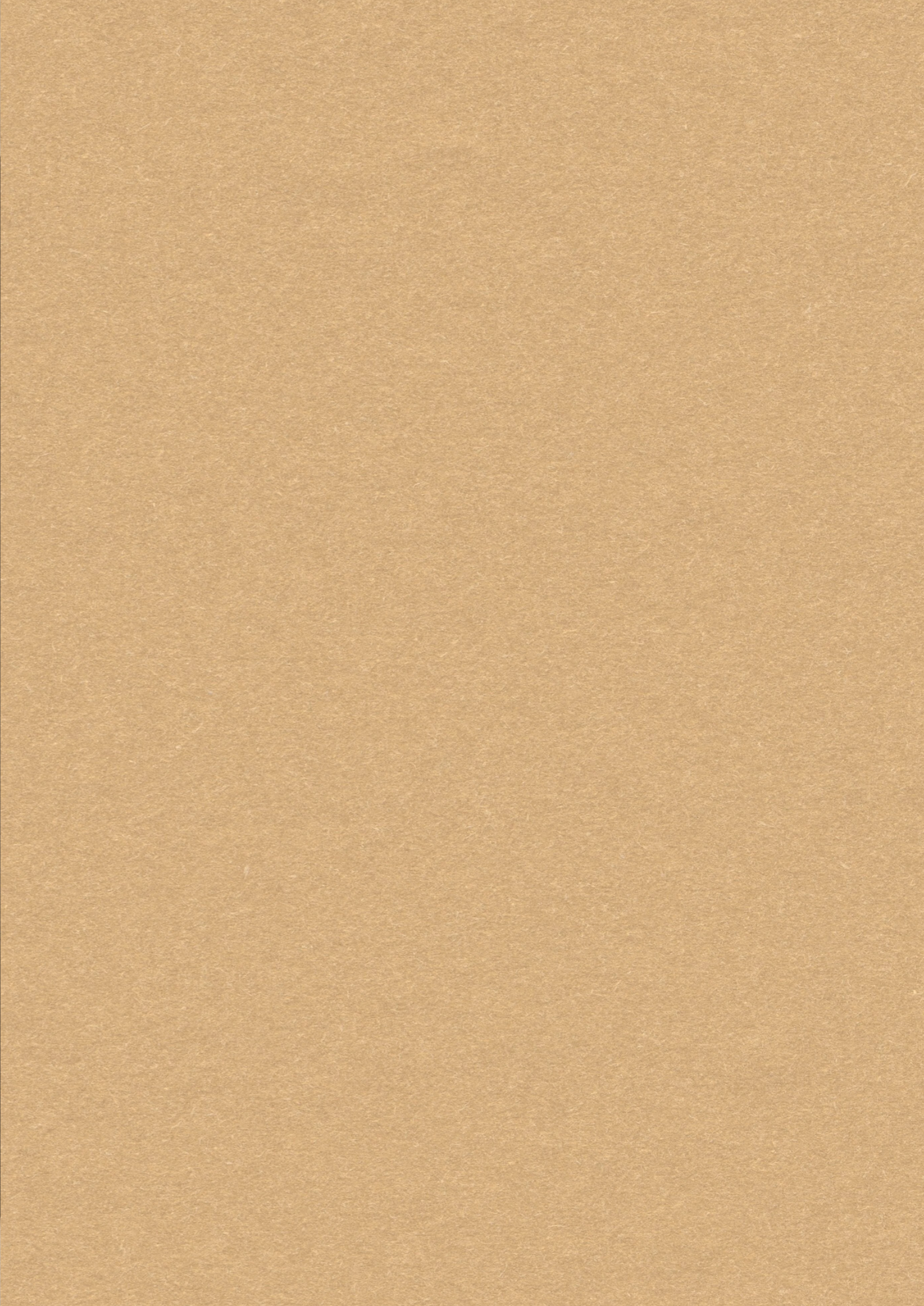
P42 - The Symphony Group PLC

P48 - Chisholm Design | Photographed by Julia Currie Photography

P54 - Mereway Kitchens

All remaining product photography provided by Ross Vincent Photography.





150
1875 2025

CROFTS & ASSINDER

EST. 1875

UNIQUELY BRITISH DESIGN

T : +44 (0) 121 622 1074

E : general@crofts.co.uk

W : www.crofts.co.uk

S: [crofts_assinder](#)

C&A03/26